

MonoRail Spot HO

LED for Display, Cabinet, Furniture

Slide and Swivel High Output LED Spotlight





Product Features

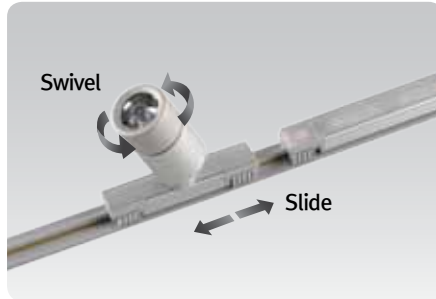
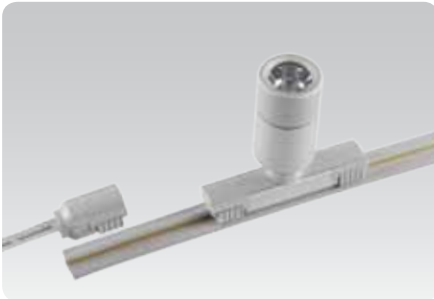
- Compatible and linkable with MonoRail system
- Slide and Swivel High Output LED Spotlight
- Suitable for furniture and showcase application
- Simple Plug & Play connection to the power track
- Available in silver or black
- To be used with constant voltage DC 24V driver

Specification

- Voltage : DC 24V
- Operating temperature : 0~45°C
- Lamp life : 50,000hrs / 70%
- Available color : 2700K, 3000K, 3500K, 4000K, 5700K
- Color rendering : Ra > 80
- Energy efficiency : 75lm/W
- Degree of protection : IP20
- Beam angle : 25°, 45°, 60°
- Total energy consumption of 2.6W



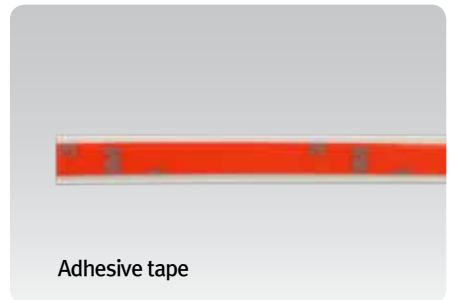
Easy connection



MNR-Rail extrusion

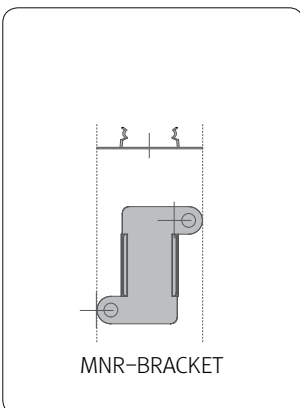


Mounting bracket



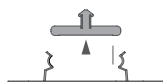
Adhesive tape

Installation



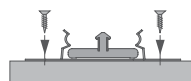
MNR-BRACKET

step.1



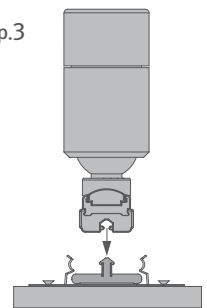
Clip MNR-BRACKET on MNR-Rail.

step.2



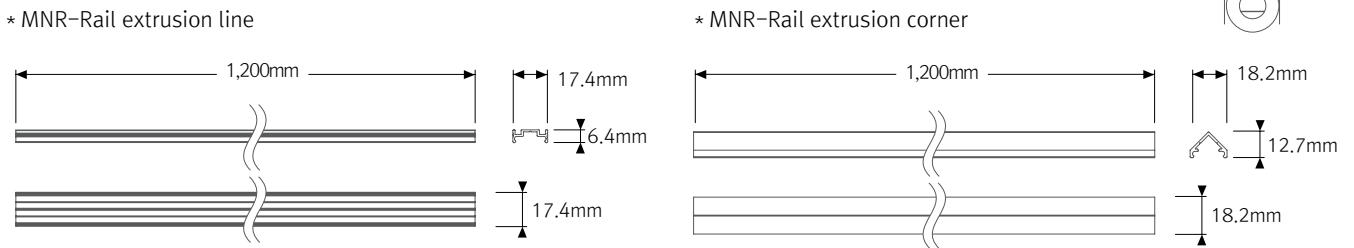
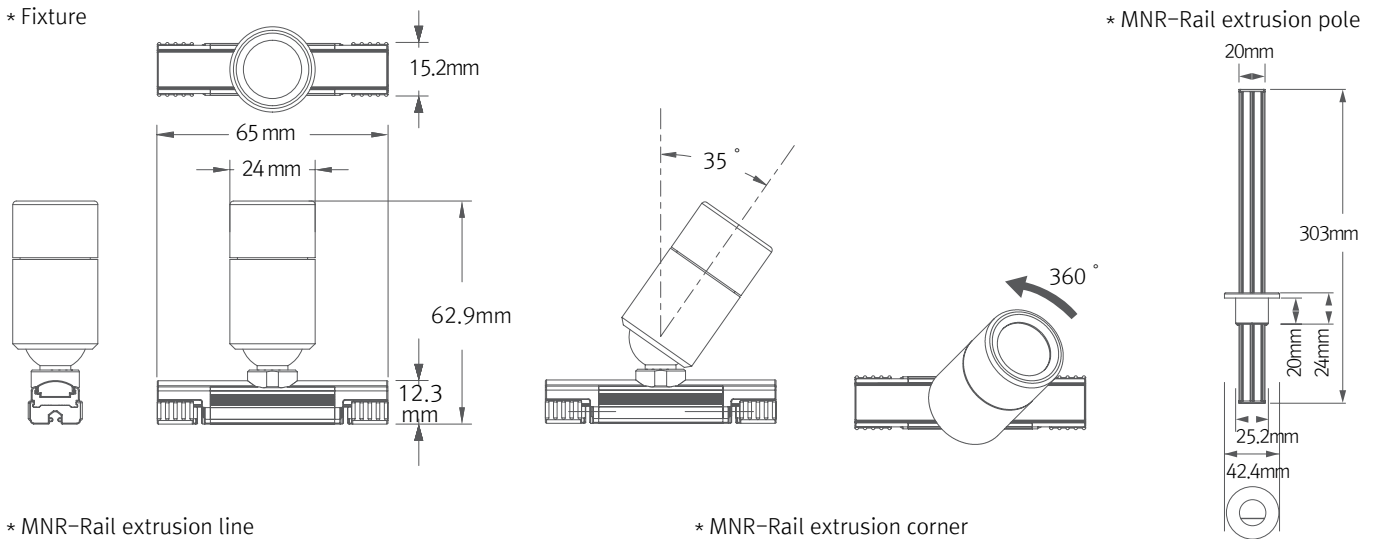
Fix MNR-BRACKET with screws on surface.

step.3

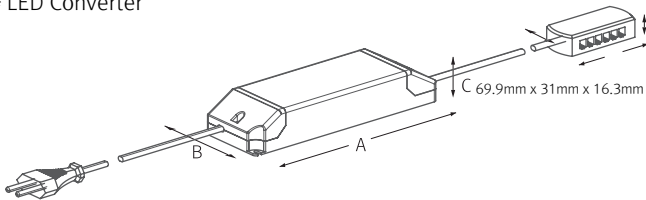


Put MonoRail Spot HO on installed MNR-Rail.

Easy connection



* LED Converter



Model name	A (mm)	B (mm)	C (mm)
FLC15-24V/T	121	45	16
FLC30-24V/T	150	41	31
FLC75-24V/T	180	60	32
FLC200-24V/T	250	65	38

Max. connection

- MonoRail Spot HO: 180W in one row(Single powerfeed)
- LED Driver

LED Driver Model Name	Max. units for LED Driver			
	24V/15W	24V/30W	24V/75W	24V/200W
MRS340K-24V-SV	5	11	28	76

Accessories



(a) MonoRail Spot HO

Beam angle	Silver	Black
25°	MRS3 40K-24V-SV-25	MRS3 40K-24V-BK-25
45°	MRS3 40K-24V-SV-45	MRS3 40K-24V-BK-45
60°	MRS3 40K-24V-SV-60	MRS3 40K-24V-BK-60



(b) Power supply track : MNR-Rail (20m)

Power supply track in Roll without adhesive
Color : White, Gray, Black



(c) Power supply track : MNR-Rail (1.2m)

Power supply track with adhesive tape
Color : White, Gray, Black



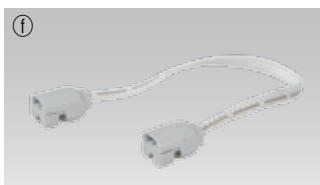
(d) Adhesive tape

Adhesive tape for MNR-Rail (16.5m)



(e) Power supply cable to the MNR-Rail : MNRPC (2500mm)

120W in one row (w/ terminal block)
180W in one row (w/o terminal block)



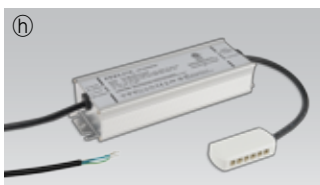
(f) Connecting cable between MNR-Rail

MNRPTC	MNRPTC1	MNRPTC2	MNRPTC4	MNRPTC6
150mm(6inch)	300mm(1feet)	600mm(1feet)	1200mm(4feet)	1800mm(6feet)



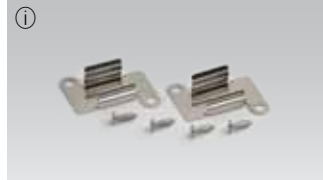
(g) LED Driver with 6way distributor, with power cord (1800mm)

Part NO	FLC15-24V/T	FLC30-24V/T	FLC75-24V/T
Capacity	24V/15W	24V/30W	24V/75W

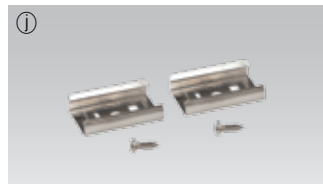


(h) LED Driver : FLC200-24V/T (200W 24V)

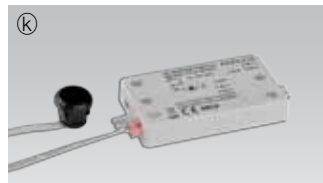
LED Driver With 6way distributor



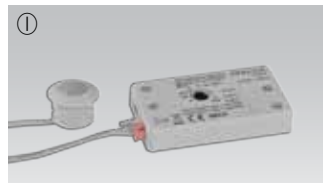
i MonoRail bracket : MNR-BRACKET (standard)



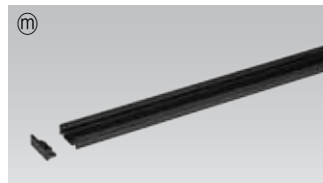
j MonoRail bracket : MNR-BRACKET1 (optional)



**k Door and motion detection sensor (DC) : FLS-M24V
Voltage : DC 24V**



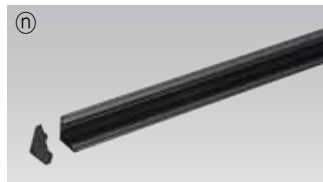
**l Human-body detection sensor (DC) : FLS-P24V
Voltage : DC 24V**



m MNR-Rail extrusion line (1.2m)

Silver	Black
MNR-EXL-SV	MNR-EXL-BK

Without MNR-Rail



n MNR-Rail extrusion corner (1.2m)

Silver	Black
MNR-EXC-SV	MNR-EXC-BK

Without MNR-Rail



o MNR-Rail extrusion pole (300mm)

Silver	Black
MNR-EXP-SV	MNR-EXP-BK

With MNR-Rail



**p End cap : MNR-CAP
Color : White, Gray, Black**

* More detail information about accessories, please refer to MonoRail page