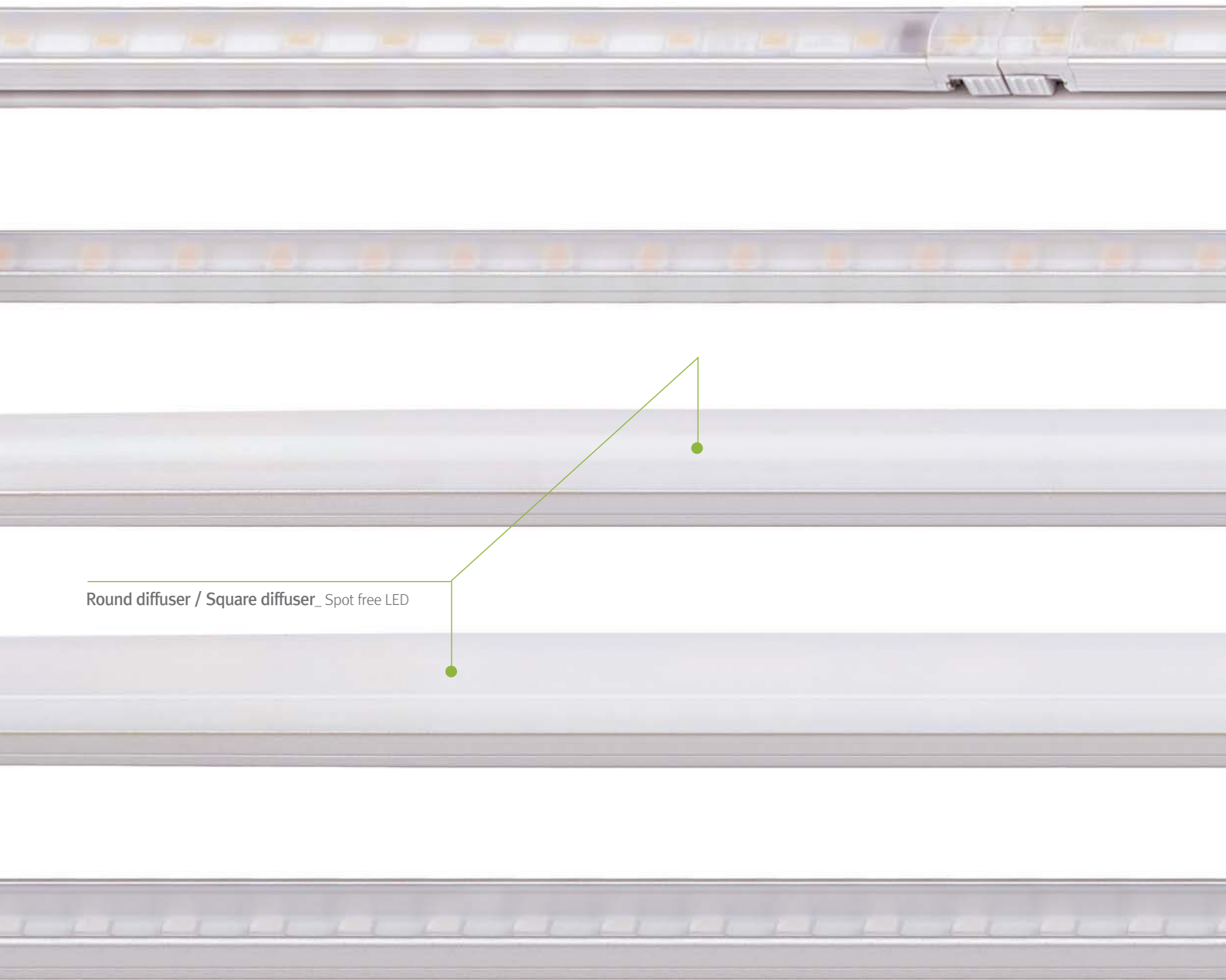


FEELUX



More Slim!

DC **FLX** Collection



Round diffuser / Square diffuser\_ Spot free LED

Change your Light, Change your Life!

**LED for Display, Cabinet, Furniture & Cove**



**MonoRail**  
Display & Cove system for long runs!

06

**MonoRail HO**  
Magnetic Power Track LED Linear Lighting

16

**MonoRail Spot**  
Slide and Swivel Mini LED Spotlight

20

**FLX Stix NDV**  
Little light, Big punch!

28

**FLX Stix HDV**  
Little light, Bigger punch!

34

**FLX Stix DDV**  
Dynamic white LED

40

**FLX Stix RDV**  
Color changing LED

46

**FLX Spot DVS**  
Super Slim LED Recessed Spotlight

54

**FLX Spot DVS Swivel**  
Super Slim Swivel LED Spotlight

60



*Display & Cove system for  
long runs!*

**MonoRail** series

FEELUX



FEELUX

## MonoRail

LED for Display, Cabinet, Furniture & Cove

Display & Cove system for long runs!



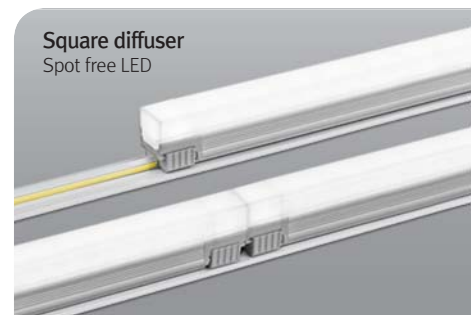


## Product Features

- Super Slim linear with power track
- Greatly extends the length of a run with a single power point
- Fixtures snaps onto power track with no breaks in light output
- Available in silver, black
- To be used with constant voltage DC 24V driver
- Dimmable with available accessories

## Specification

- Voltage : DC 24V
- Operating temperature : 0~45° C
- Lamp life : 40,000hr / 70%
- Available color : 2700K, 3000K, 3500K, 4000K, 6000K
- Color rendering : Ra > 85
- Energy efficiency : 75lm/W
- Degree of protection : IP20





### **MonoRail**

Display & Cove System for Long runs!



MonoRail 1W Length (95mm)



MonoRail 4W Length (286mm)



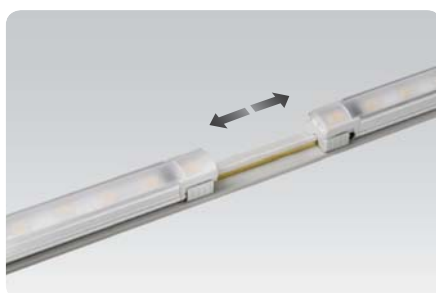
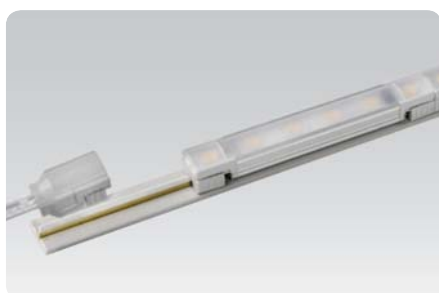
MonoRail 8W Length (572mm)



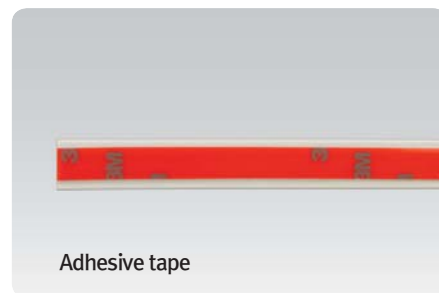
MNR-Rail (power supply track)



Easy connection



Mounting bracket



Adhesive tape

Various option



Slim light system

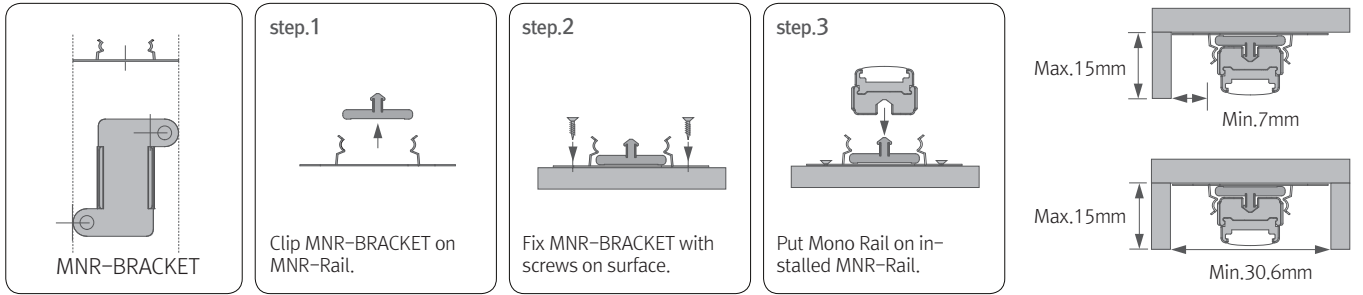


MNR-Rail extrusion

MNR-Rail – Power supply track for FLX Series



## Installation



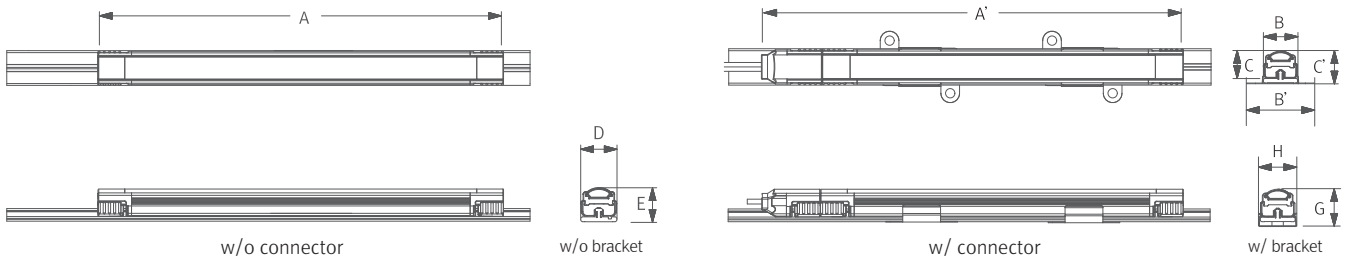
## Max. connection

- MonoRail :180W in one row (Single power feed)
- LED Driver

Model Name	LED Driver	Max. units for LED Driver	
		24V/75W	24V/200W
MNR1 40K-24V		51	139
MNR4 40K-24V		17	45
MNR8 40K-24V		8	22

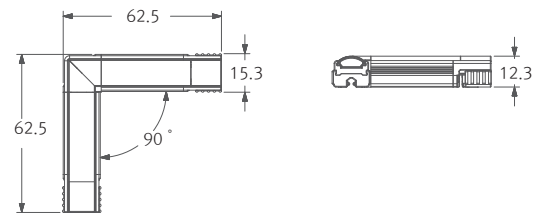
## Dimension

### Fixture

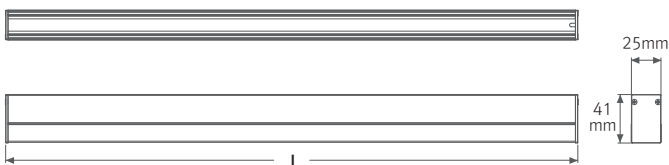


Model Name	Power Input (V)	Lamp Power (W)	A (mm)	A' (mm)	B (mm)	B' (mm)	C (mm)	C' (mm)	D (mm)	E (mm)	G (mm)	H (mm)
MNR1 40K-24V	DC 24	1.3	95	121	15.3	30.6	12.3	14.9	15.6	14.6	17	16.6
MNR4 40K-24V	DC 24	4	286	312	15.3	30.6	12.3	14.9	15.6	14.6	17	16.6
MNR8 40K-24V	DC 24	8	572	598	15.3	30.6	12.3	14.9	15.6	14.6	17	16.6

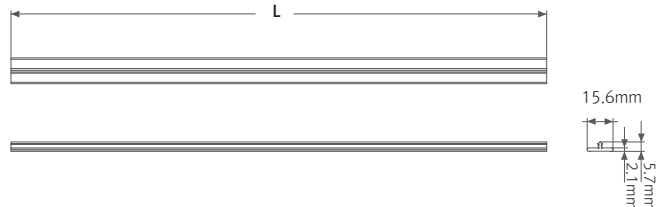
### 90° connector



### Slim light system



### MNR-Rail extrusion line



**Accessories**



**(a) Power supply track : MNR-Rail (20m)**

Power supply track in Roll without adhesive  
Color : White, Gray, Black



**(b) Power supply track : MNR-Rail (1.2m)**

Power supply track with adhesive tape  
Color : White, Gray, Black



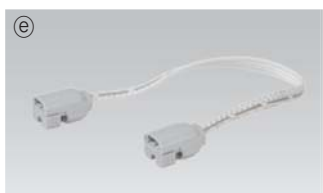
**(c) Adhesive tape**

Adhesive tape for MNR-Rail (16.5 m)



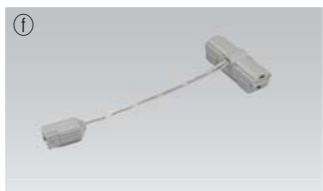
**(d) Power supply cable to the MNR-Rail : MNRPC (2500mm)**

120W in one row (w/ terminal block)  
180W in one row (w/o terminal block)



**(e) Connecting cable between MNR-Rail**

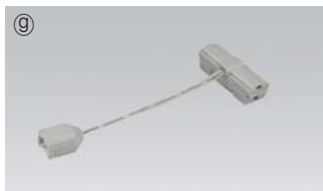
MNRPTC	MNRPTC1	MNRPTC2	MNRPTC4	MNRPTC6
150mm(6inch)	300mm(1feet)	600mm(1feet)	1200mm(4feet)	1800mm(6feet)



**(f) Connecting cable between MNR-Rail and FLX Stix NDV : MNRPTC-NDV**

MNRPTC-NDV1	MNRPTC-NDV2
300mm(1feet)	600mm(2feet)

50W in one row



**(g) Connecting cable between MNR-Rail and FLX Stix HDV&DDV : MNRPTC-HDV**

MNRPTC-HDV1	MNRPTC-HDV2
300mm(1feet)	600mm(2feet)

50W in one row



**(h) Connecting cable between MNR-Rail and FLX Spot DVS : MNRPTC-DVS**

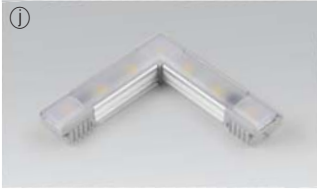
MNRPTC-DVS1	MNRPTC-DVS2
300mm(1feet)	600mm(2feet)

50W in one row



**(i) Sidefeed for seamless extension(1W) : MNR1 40K-24V-S**

120W in one row



① 90° connector : MNR1 40K-24V-90

MonoRail90° connector (1W)  
120W in one row



② LED Driver : FLC75-24V/T (75W 24V)

LED Driver With 6way distributor, with power cord(1800mm)



③ LED Driver : FLC200-24V/T (200W 24V)

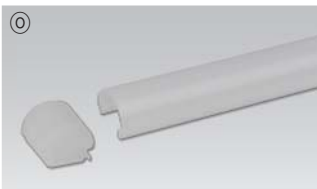
LED Driver With 6way distributor



④ MonoRail bracket : MNR-BRACKET (standard)

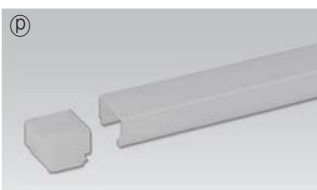


⑤ MonoRail bracket : MNR-BRACKET1 (optional)



⑥ Round Diffuser

MNR1CVRM	MNR4CVRM	MNR8CVRM
1W	4W	8W



⑦ Square Diffuser

MNR1CVSM	MNR4CVSM	MNR8CVSM
1W	4W	8W



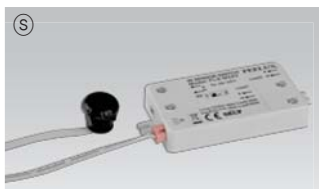
⑧ Dimming Interface (1-10V) : FDC-L10

Max. 100W (100W/CH, 1CH)



⑨ Dimming Interface(0-10/1-10,DMX512)

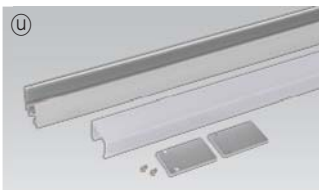
FDA-L2M0 : Max. 200W (100W/CH, 2CH)  
FDA-L5M : Max. 200W (100W/CH, 5CH)



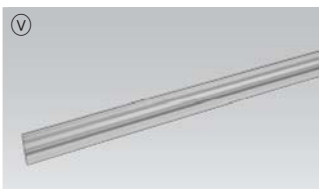
⑤ **Door and motion detection sensor : FLS-M24V**  
Voltage : DC 24V



⑥ **Human-body detection sensor : FLS-P24V**  
Voltage : DC 24V



⑦ **Slim light system (1.2m) : SLS-EXT**



⑧ **MNR-Rail extrusion line (1.2m)**

Silver	Black
MNR-EXL-SV	MNR-EXL-BK



⑨ **MNR-Rail extrusion corner (1.2m)**

Silver	Black
MNR-EXC-SV	MNR-EXC-BK



⑩ **MNR-Rail extrusion pole (1.2m)**

Silver	Black
MNR-EXP-SV	MNR-EXP-BK



⑪ **End cap : MNR-CAP**  
Color : White, Gray, Black

# MonoRail HO

LED for Display, Cabinet, Furniture & Cove

Magnetic Power Track LED Linear Lighting



## Product Features

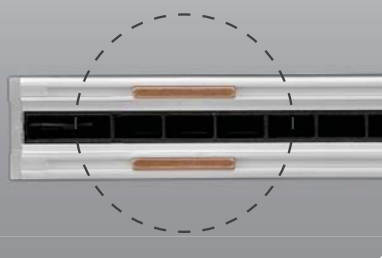
- High output linear lighting with magnetic power track
- Power is supplied through magnet
- Stronger magnet, better adhesion
- Available in silver, black
- To be used with constant voltage DC 24V driver
- Dimmable with available accessories

## Specification

- Voltage : DC 24V
- Operating temperature : 0~45° C
- Lamp life : 40,000hr / 70%
- Available color : 2700K, 3000K, 3500K, 4000K, 6000K
- Color rendering : Ra > 85
- Energy efficiency : 100lm/W
- Degree of protection : IP20



Powered through magnet



Square diffuser  
Spot free LED



## MonoRail HO

Magnetic Power Track LED Linear Lighting



MonoRail HO 3W Length (139.2mm)



MonoRail HO 5W Length (273.7mm)



MNH-Rail (Power supply track)

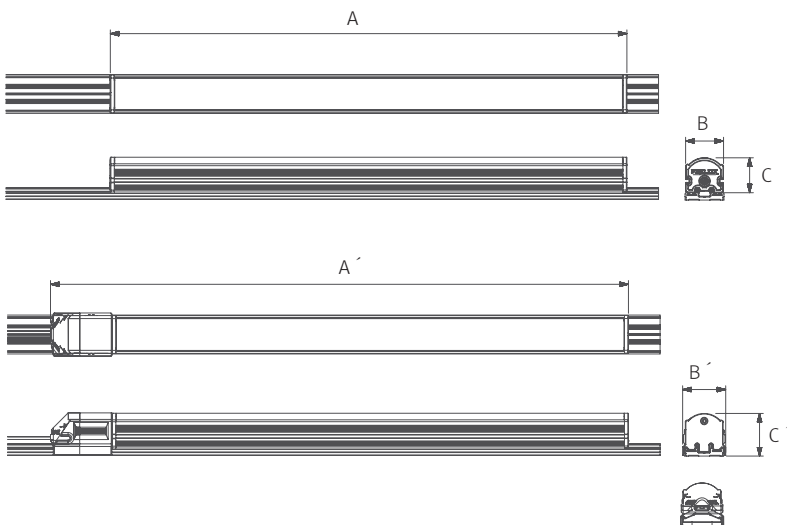
### Max. connection

- MonoRail HO : 90W in one row (Single power feed)
- LED Driver

LED Driver Model Name	Max. units for LED Driver	
	24V/75W	24V/200W
MNH3 40K-24V	26	71
MNH5 40K-24V	13	36

### Dimension

Fixture



Model name	Power Input (V)	Lamp Power(W)	A(mm)	A' (mm)	B(mm)	B' (mm)	C(mm)	C' (mm)
MNH3 40K-24V	DC24	2.5	139.2	171.7	20.1	22.8	18.5	22.6
MNH5 40K-24V	DC24	5	273.7	306.2	20.1	22.8	18.5	22.6



## Accessories



**(a) Power supply track : MNH-Rail (1.2m)**

Color : Gray, Black



**(b) Power supply cable to MNH-Rail : MNHPC (2500mm)**



**(c) LED Driver with 6way distributor**

Part No	FLC15-24V/T	FLC30-24V/T	FLC75-24V/T
Capacity	15W 24V	30W 24V	75W 24V



**(d) LED Driver : FLC200-24V/T (200W 24V)**

LED Driver With 6way distributor



**(e) Dimming Interface (1-10V) : FDC-L10**

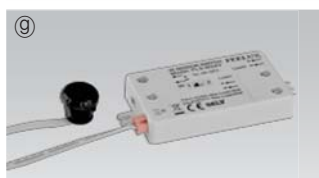
Max. 100W (100W/CH, 1CH)



**(f) Dimming Interface(0-10/1-10,DMX512)**

FDA-L2M0 : Max. 200W (100W/CH, 2CH)

FDA-L5M : Max. 200W (100W/CH, 5CH)



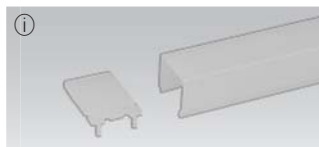
**(g) Door and motion detection sensor : FLS-M24V**

Voltage : DC 24V



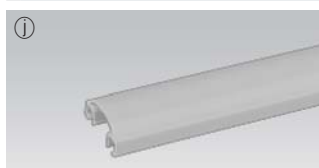
**(h) Human-body detection sensor : FLS-P24V**

Voltage : DC 24V



**(i) Square Diffuser**

MNH3CVSM	MNH5CVSM
3W	5W



**(j) MNH-Rail Cover (1.2m)**

Color : Gray, Black



**(k) End cap : MNH-CAP**

Color : Gray, Black

FEELUX

# MonoRail Spot

LED for Display, Cabinet, Furniture & Cove

Slide and Swivel Mini LED Spotlight





## Product Features

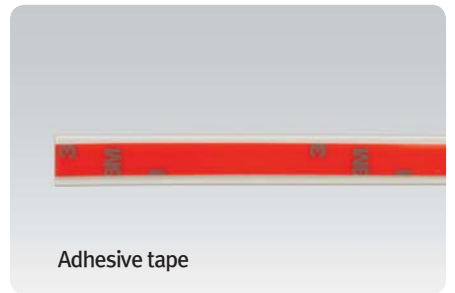
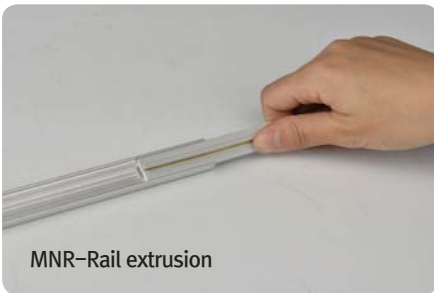
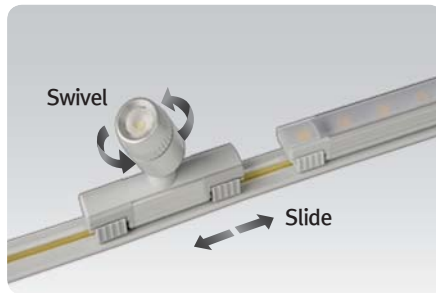
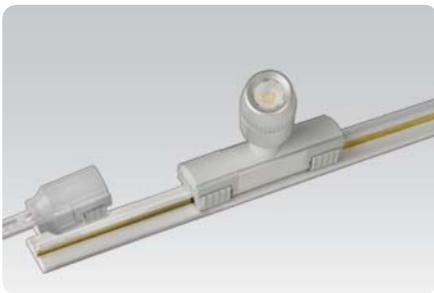
- Compatible and linkable with MonoRail system
- Slide and swivel mini LED spotlight
- Suitable for furniture and showcase application
- Simple Plug & Play connection to the power track
- Available in silver, black
- To be used with constant voltage DC 24V driver

## Specification

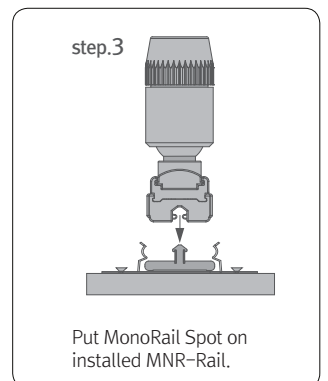
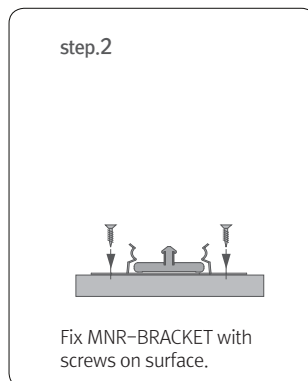
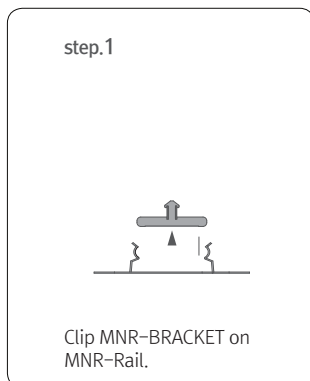
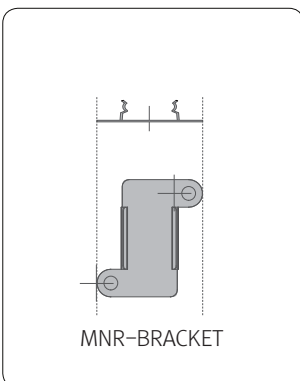
- Voltage : DC 24V
- Operating temperature : 0~45° C
- Lamp life : 40,000hr / 70%
- Available color : 2700K, 3000K, 4000K, 6000K
- Color rendering : Ra > 85
- Energy efficiency : 65lm/W
- Degree of protection : IP20
- Beam angle : Standard : 30° / Optional : 18°, 45°
- Total energy consumption of 1.3W
- Available in silver, black



## Easy connection

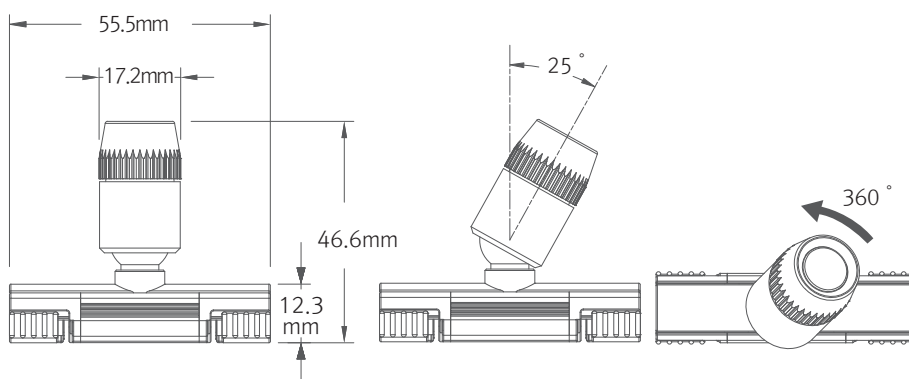


## Installation

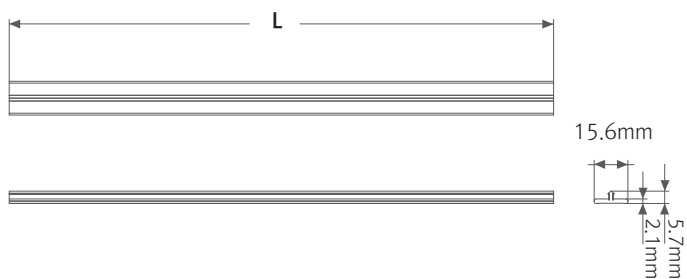


## Dimension

Fixture



MNR-Rail extrusion line

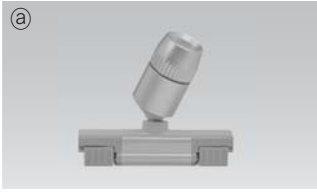


## Max. connection

- MonoRail Spot : 180W in one row (Single power feed)
- LED Driver

LED Driver Model Name	Max. units for LED Driver			
	24V/15W	24V/30W	24V/75W	24V/200W
MRS1 40K-24V-SV	10	20	52	140

## Accessories



### Ⓐ MonoRail Spot

Silver	Black
MRS1 40K-24V-SV	MRS1 40K-24V-BK



### Ⓑ Power supply track : MNR-Rail (20m)

Power supply track in Roll without adhesive  
Color : White, Gray, Black



### Ⓒ Power supply track : MNR-Rail (1.2m)

Power supply track with adhesive tape  
Color : White, Gray, Black



### Ⓓ Adhesive tape

Adhesive tape for MNR-Rail (16.5m)



### Ⓔ Power supply cable to the MNR-Rail : MNRPC (2500mm)

120W in one row (w/ terminal block)  
180W in one row (w/o terminal block)



### Ⓕ Connecting cable between MNR-Rail

MNRPTC	MNRPTC1	MNRPTC2	MNRPTC4	MNRPTC6
150mm(6inch)	300mm(1feet)	600mm(1feet)	1200mm(4feet)	1800mm(6feet)



### Ⓖ LED Driver with 6way distributor, with power cord (1800mm)

Part NO	FLC15-24V/T	FLC30-24V/T	FLC75-24V/T
Capacity	24V/15W	24V/30W	24V/75W



### Ⓗ LED Driver : FLC200-24V/T (200W 24V)

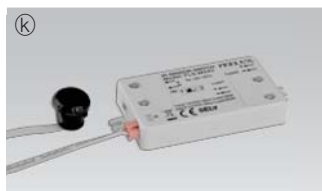
LED Driver With 6way distributor



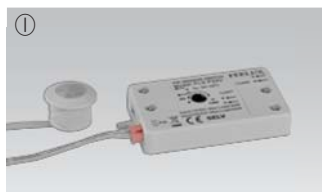
### Ⓖ MonoRail bracket : MNR-BRACKET (standard)



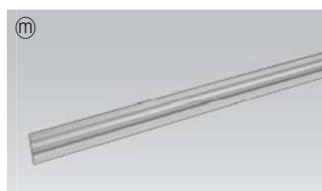
① MonoRail bracket : MNR-BRACKET1 (optional)



Ⓚ Door and motion detection sensor (DC) : FLS-M24V  
Voltage : DC 24V



① Human-body detection sensor (DC) : FLS-P24V  
Voltage : DC 24V



Ⓜ MNR-Rail extrusion line (1.2m)

Silver	Black
MNR-EXL-SV	MNR-EXL-BK



Ⓝ MNR-Rail extrusion corner (1.2m)

Silver	Black
MNR-EXC-SV	MNR-EXC-BK



Ⓞ MNR-Rail extrusion pole (1.2m)

Silver	Black
MNR-EXP-SV	MNR-EXP-BK



Ⓟ End cap : MNR-CAP  
Color : White, Gray, Black

\* More detail information about accessories, please refer to MonoRail page no.13





*More slim, Better design!!*

LED for Display, Cabinet, Furniture & Cove

**FLX Stix** Series

FEELUX



FEELUX

# FLX Stix NDV

LED for Display, Cabinet, Furniture & Cove

Little light, Big punch!!



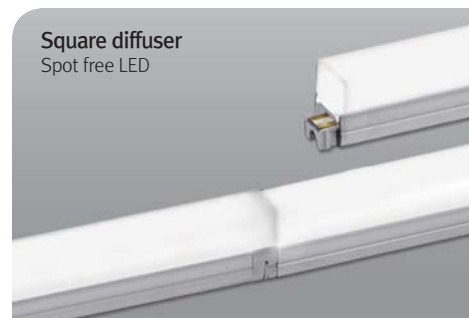
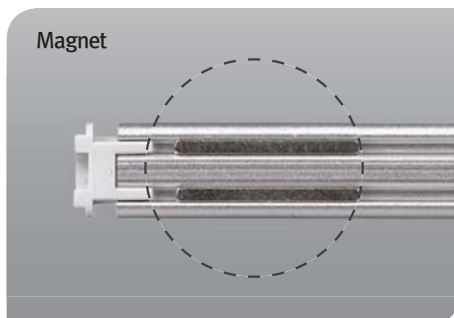


## Product Features

- Super Slim linear LED with standard output
- Quick connection system between fixtures
- Many lengths available
- Various mounting methods including magnetic
- To be used with constant voltage DC 24V driver
- Dimmable with available accessories

## Specification

- Voltage : DC 24V
- Operating temperature : 0-45° C
- Lamp life : 40,000hr/70%
- Available color : 2700K, 3000K, 3500K, 4000K, 6000K
- Color rendering : Ra > 85
- Energy efficiency : 75lm/W
- Degree of protection IP20





**FLX Stix NDV**  
Standard Output



FLX Stix NDV 1W length (100 mm)



FLX Stix NDV 3W length (192 mm)



FLX Stix NDV 4W length (285 mm)



FLX Stix NDV 7W length (565 mm)



FLX Stix NDV 11W length (845 mm)

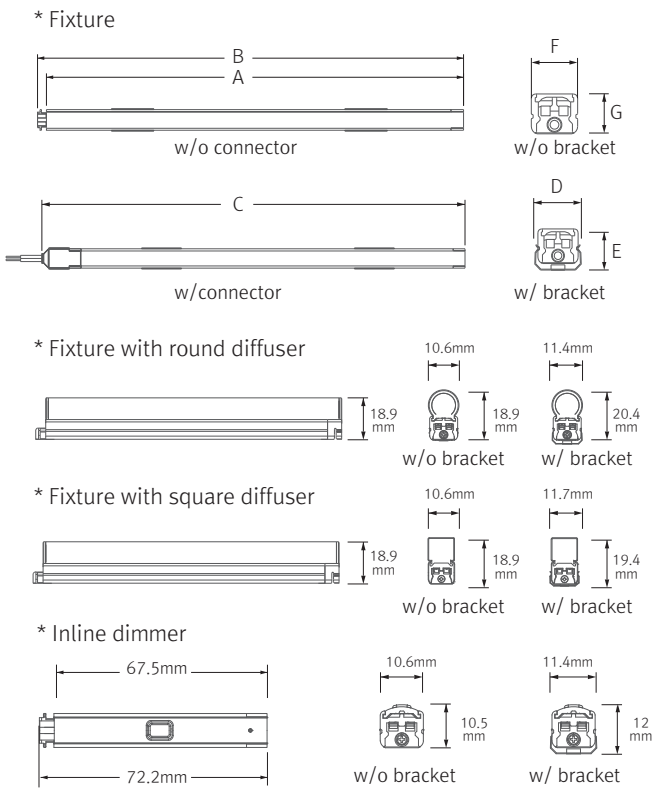


FLX Stix NDV 15W length (1123mm)

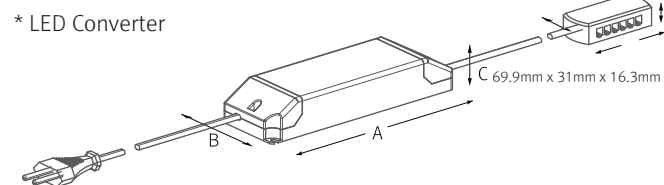
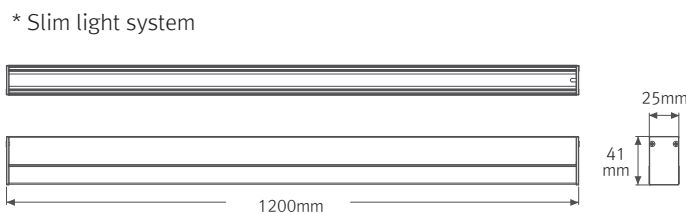
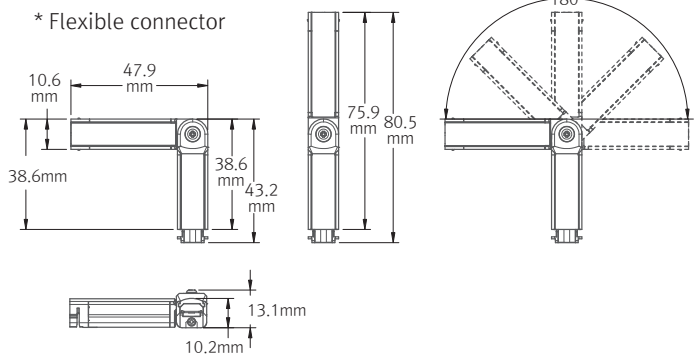
Various options



Dimension



Model Name	Power Input (V)	Lamp Power (W)	A (mm)	B (mm)	C (mm)	D (mm)	E (mm)	F (mm)	G (mm)
NDV1 40K-24V	DC 24	1.2	95	100	117	12	11	10.6	9
NDV3 40K-24V	DC 24	2.4	188	192	210	12	11	10.6	9
NDV4 40K-24V	DC 24	3.5	280	285	302	12	11	10.6	9
NDV7 40K-24V	DC 24	7	560	565	582	12	11	10.6	9
NDV11 40K-24V	DC 24	10.5	840	845	862	12	11	10.6	9
NDV15 40K-24V	DC 24	14	1118	1123	1140	12	11	10.6	9

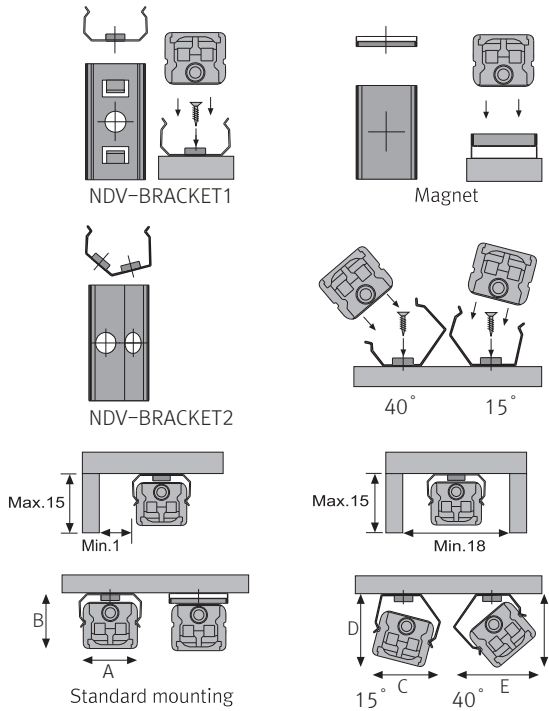


Modle name	A (mm)	B (mm)	C (mm)
FLC15-24V/T	121	45	16
FLC30-24V/T	150	41	31
FLC75-24V/T	180	60	32
FLC200-24V/T	250	65	38

## Easy connection



## Installation



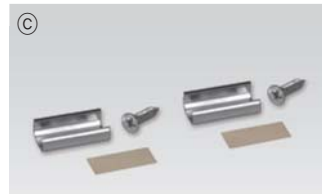
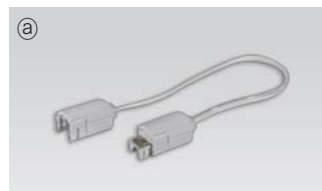
## Max. connection

- FLX Stix NDV : 55W in one row (single power feed)
- LED Driver

LED Driver Model Name	Max. units for LED Driver			
	24V/15W	24V/30W	24V/75W	24V/200W
NDV1 40K-24V	12	25	62	160
NDV3 40K-24V	5	10	25	66
NDV4 40K-24V	4	7	18	50
NDV7 40K-24V	2	4	10	28
NDV11 40K-24V	1	2	6	18
NDV15 40K-24V	1	2	5	13

	A(mm)	B(mm)	C(mm)	D(mm)	E(mm)	F(mm)
Flat type	11.9	11.2	13.5	13.5	14.5	13
Round type	11.9	19.8	15.7	15.7	18.8	20.3
Square type	11.9	19.6	15.5	15.8	18.8	20.3

## Accessories



### Ⓐ Connecting cables (Between FLX Stix NDV & FLX Stix NDV)

NDVPTC	NDVPTC1	NDVPTC2	NDVPTC4	NDVPTC6
150mm(6inch)	300mm(1feet)	600mm(2feet)	1200mm(4feet)	1800mm(6feet)

### Ⓑ Power cable : NDVPC

Power cable (Between DIVA2 & 6-way distributor)

### Ⓒ Mounting bracket : NDV-BRACKET 1

Included in fixture

### Ⓓ Angle bracket (15° & 40°) : NDV-BRACKET 2

### Ⓔ Sidefeed for seamless extension (3W) : NDV3 40K-24V-S

The dimension is the same as NDV3 40K-24V

Powered only through cable, no power supply on the input connector

### Ⓕ Connector : NDV1 40K-24V-FLEX

FLX Stix NDV Flexible connector(1W)

### Ⓖ End cap : NDV-CAP

Included in fixture

### Ⓗ LED Driver with 6way distributor, with power cord (1800mm)

Part No	FLC15-24V/T	FLC30-24V/T	FLC75-24V/T
Capacity	15W 24V	30W 24V	75W 24V



**① LED Driver : FLC200-24V/T (200W 24V)**  
LED Driver With 6way distributor



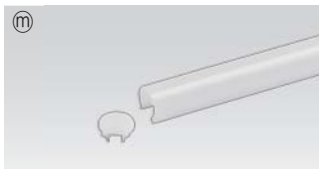
**① Dimming Interface (1-10V) : FDC-L10**  
Max. 100W (100W/CH, 1CH)



**Ⓚ Dimming Interface(0-10/1-10,DMX512)**  
FDA-L2M0 : Max. 200W (100W/CH, 2CH)  
FDA-L5M : Max. 200W (100W/CH, 5CH)

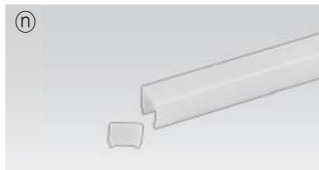


**① Inline dimmer : NDVDIM (Max 55W in a row)**



**Ⓜ Round diffuser**

NDV1CVRM	NDV3CVRM	NDV4CVRM	NDV7CVRM	NDV11CVRM	NDV15CVRM
1W	3W	4W	7W	11W	15W



**Ⓝ Square diffuser**

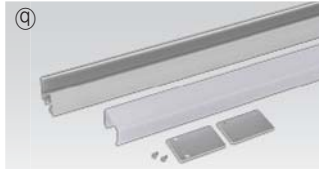
NDV1CVSM	NDV3CVSM	NDV4CVSM	NDV7CVSM	NDV11CVSM	NDV15CVSM
1W	3W	4W	7W	11W	15W



**Ⓞ Door and motion detection sensor : FLS-M24V**  
Voltage : DC 24V



**Ⓟ Human-body detection sensor : FLS-P24V**  
Voltage : DC 24V



**④ Slim light system (1.2m) : SLS-EXT**



**Ⓡ Connecting bracket : NDV-BRACKET3**  
Included in fixture



**Ⓢ Power bracket : NDV-BRACKET4**  
Provided with Power cable (NDVPC)

FEELUX

# FLX Stix HDV

LED for Display, Cabinet, Furniture & Cove

Little light, Bigger punch!





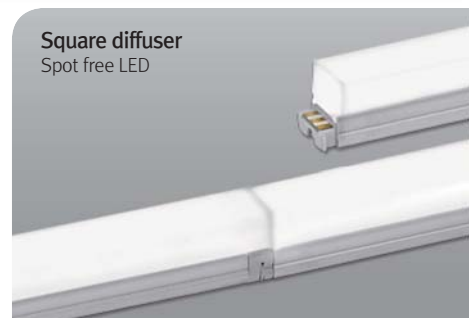
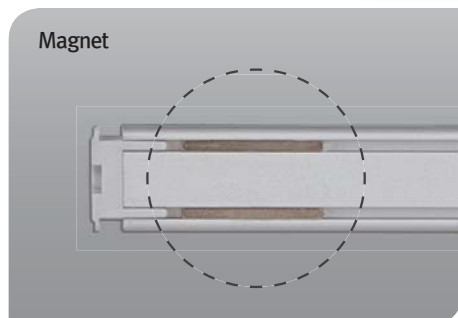


### Product Features

- Super Slim linear LED with high output
- Quick connection system between fixtures
- Many lengths available
- Various mounting methods including magnetic
- To be used with constant voltage DC 24V driver
- Dimmable with available accessories

### Specification

- Voltage : DC 24V
- Operating temperature : 0~45° C
- Lamp life : 40,000hr/70%
- Available color : 2700K, 3000K, 3500K, 4000K, 6000K
- Color rendering : Ra > 85
- Energy efficiency : 85 lm/W
- Degree of protection IP20





**FLX Stix HDV**  
High Output



FLX Stix HDV 3W Length (145 mm)



FLX Stix HDV 6W Length (285 mm)



FLX Stix HDV 12W Length (565 mm)



FLX Stix HDV 18W Length (845 mm)



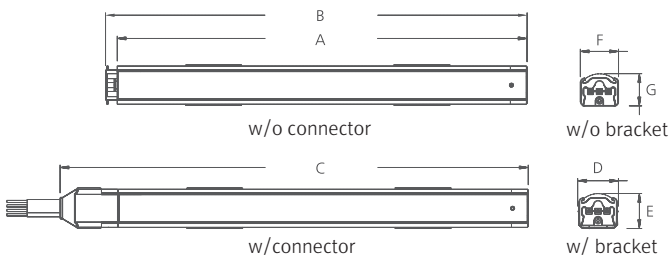
FLX Stix HDV 24W Length (1123mm)

Various options



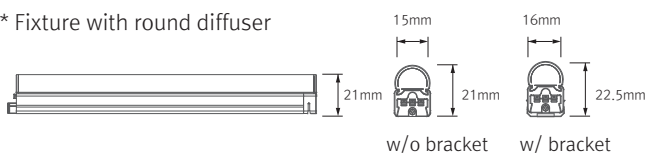
Dimension

\* Fixture

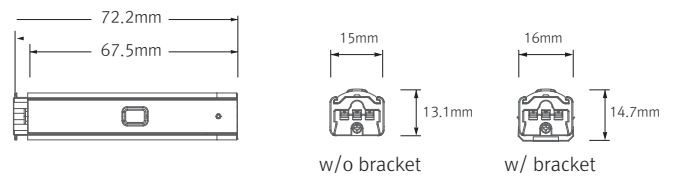


Model Name	Power Input (V)	Lamp Power (W)	A (mm)	B (mm)	C (mm)	D (mm)	E (mm)	F (mm)	G (mm)
HDV3 40K-24V	DC 24	2.9	140	145	162	16	14	15	12.5
HDV6 40K-24V	DC 24	5.8	280	285	302	16	14	15	12.5
HDV12 40K-24V	DC 24	11.6	560	565	582	16	14	15	12.5
HDV18 40K-24V	DC 24	17.4	840	845	862	16	14	15	12.5
HDV24 40K-24V	DC 24	23.2	1118	1123	1140	16	14	15	12.5

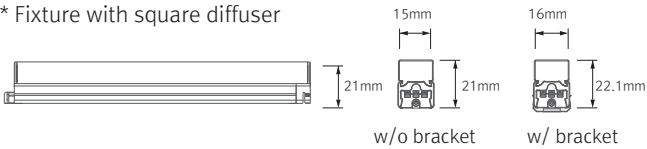
\* Fixture with round diffuser



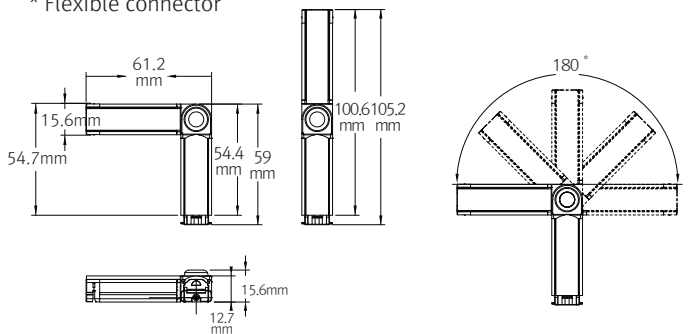
\* Inline dimmer



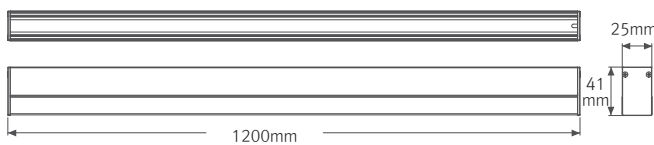
\* Fixture with square diffuser



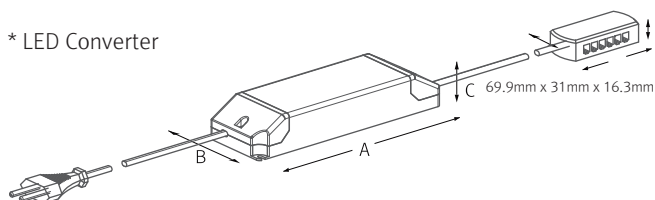
\* Flexible connector



\* Slim light system

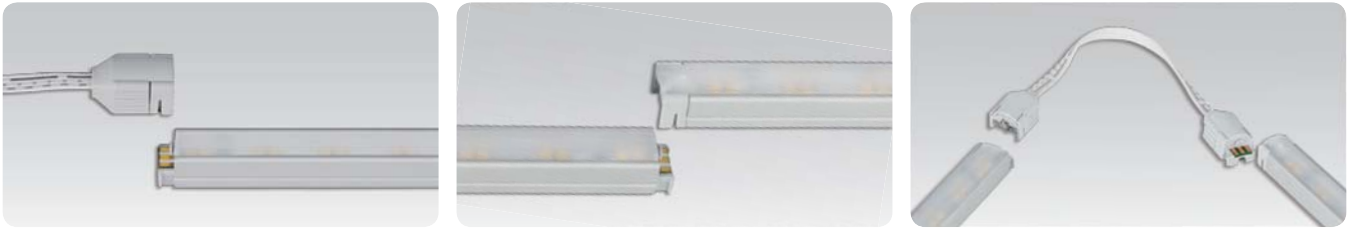


\* LED Converter

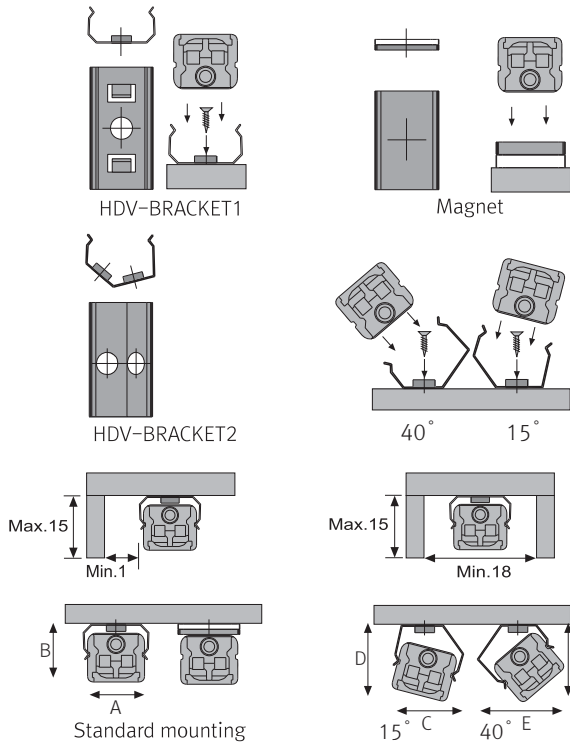


Mode name	A (mm)	B (mm)	C (mm)
FLC15-24V/T	121	45	16
FLC30-24V/T	150	41	31
FLC75-24V/T	180	60	32
FLC200-24V/T	250	65	38

## Easy connection



## Installation



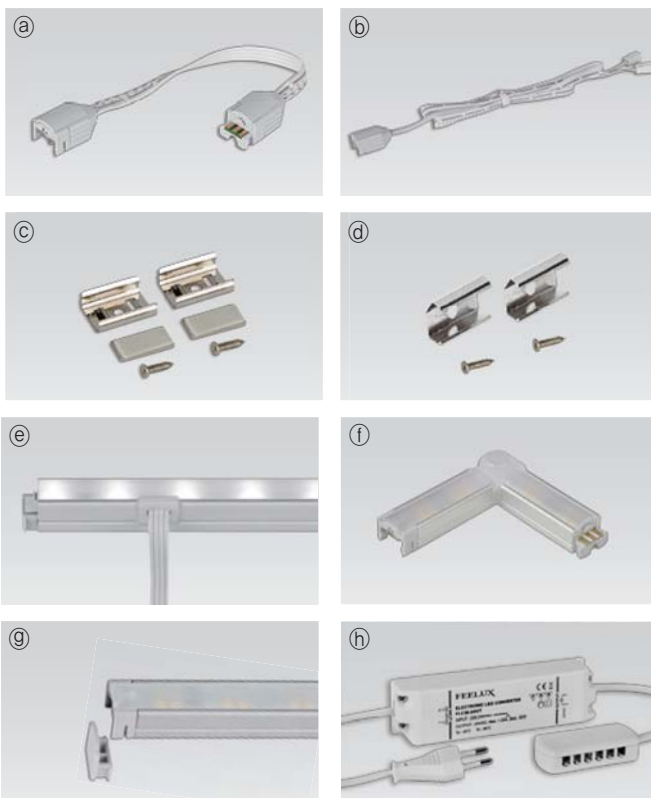
## Max. connection

- FLX Stix HDV : 75W in one row (single power feed)
- LED Driver

LED Driver Model Name	Max. units for LED Driver			
	24V/15W	24V/30W	24V/75W	24V/200W
HDV3 40K-24V	5	10	25	66
HDV6 40K-24V	2	5	12	33
HDV12 40K-24V	1	2	6	16
HDV18 40K-24V	-	1	4	11
HDV24 40K-24V	-	1	3	8

	A(mm)	B(mm)	C(mm)	D(mm)	E(mm)	F(mm)
Flat type	16.8	14.2	17.5	16.5	19.1	17.5
Round type	16.8	22.1	18.8	24.4	23.4	22.9
Square type	16.8	22.6	21.3	26.2	25.7	25.7

## Accessories



### Ⓐ Connecting cables (Between FLX Stix HDV & FLX Stix HDV)

HDVPTC	HDVPTC1	HDVPTC2	HDVPTC4	HDVPTC6
150mm(6inch)	300mm(1feet)	600mm(2feet)	1200mm(4feet)	1800mm(6feet)

### Ⓑ Power cable : HDVPC

Power cable 2500mm (Between FLX Stix HDV & 6-way distributor)

### Ⓒ Mounting bracket : HDV-BRACKET1

Included in fixture

### Ⓓ Angle bracket (15° & 40°) : HDV-BRACKET2

### Ⓔ Sidefeed for seamless extension (3W) : HDV3 40K-24V-S

The dimension is the same as HDV3 40K-24V

Powered only through cable, no power supply on the input connector

### Ⓕ Connector : HDV2 40K-24V-FLEX

FLX Stix HDV Flexible connector (2W)

### Ⓖ End cap : HDV-CAP

Included in fixture

### Ⓗ LED Driver with 6way distributor, with power cord (1800mm)

Part No	FLC15-24V/T	FLC30-24V/T	FLC75-24V/T
Capacity	15W 24V	30W 24V	75W 24V



① LED Driver : FLC200-24V/T (200W 24V)  
LED Driver With 6way distributor



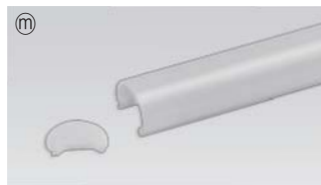
① Dimming Interface (1-10V) : FDC-L10  
Max. 100W (100W/CH, 1CH)



Ⓚ Dimming Interface(0-10/1-10,DMX512)  
FDA-L2M0 : Max. 200W (100W/CH, 2CH)  
FDA-L5M : Max. 200W (100W/CH, 5CH)

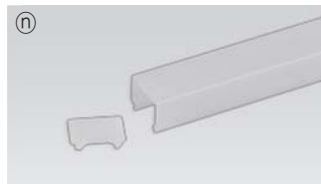


① Inline dimmer : HDVDIM (Max 75W in a row)



Ⓜ Round diffuser

HDV3CVRM	HDV6CVRM	HDV12CVRM	HDV18CVRM	HDV24CVRM
3W	6W	12W	18W	24W



Ⓝ Square diffuser

HDV3CVSM	HDV6CVSM	HDV12CVSM	HDV18CVSM	HDV24CVSM
3W	6W	12W	18W	24W



Ⓞ Door and motion detection sensor : FLS-M24V  
Voltage : DC 24V



Ⓟ Human-body detection sensor : FLS-P24V  
Voltage : DC 24V



Ⓠ Slim light system (1.2m) : SLS-EXT

FEELUX

# FLX Stix DDV

LED for Display, Cabinet, Furniture & Cove

Dynamic white LED



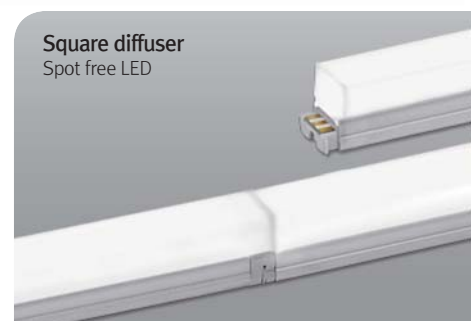
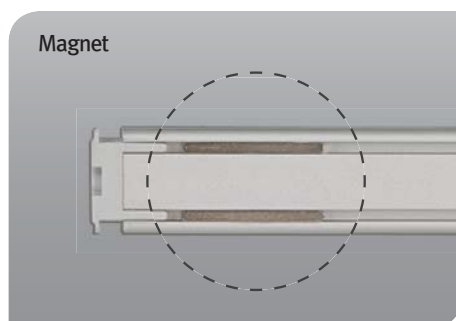


### Product Features

- Super Slim linear LED with white color changing output
- Quick connection system between fixtures
- Many lengths available
- Various mounting methods including magnetic
- To be used with constant voltage DC 24V driver
- Dimmable with available accessories

### Specification

- Voltage : DC 24V
- Operating temperature : 0~45° C
- Lamp life : 40,000hr/70%
- Available color : 2700K ~ 6000K
- Color rendering : Ra > 85
- Energy efficiency : 85 lm/W
- Degree of protection IP20





**FLX Stix DDV**  
Dynamic White



FLX Stix DDV 3W Length (145 mm)



FLX Stix DDV 6W Length (285 mm)



FLX Stix DDV 12W Length (565 mm)



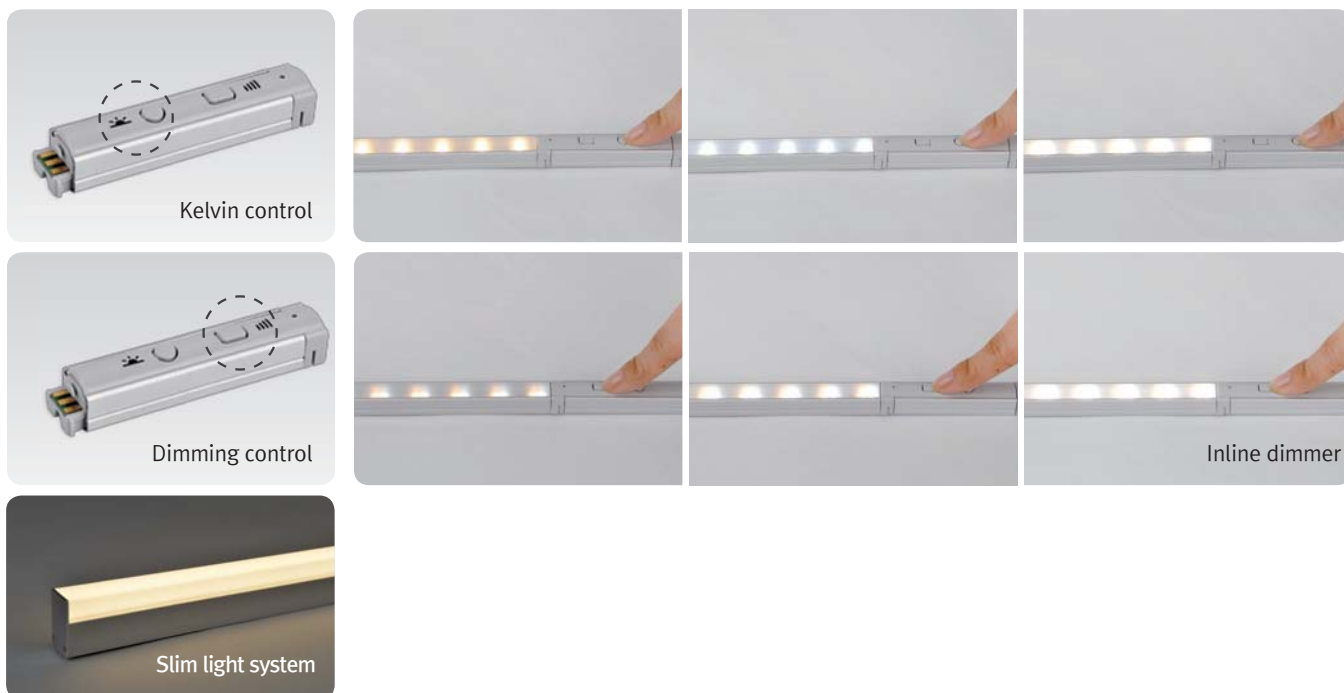
FLX Stix DDV 18W Length (845 mm)



FLX Stix DDV 24W Length (1123mm)

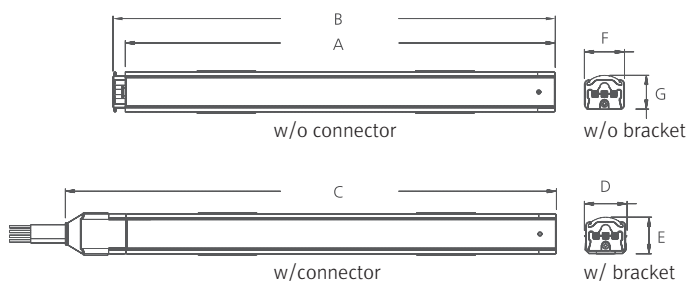


Various options



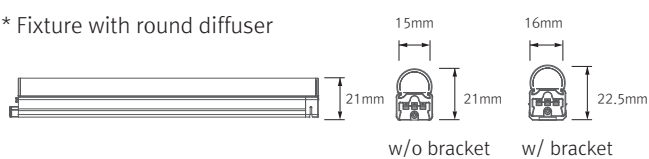
Dimension

\* Fixture

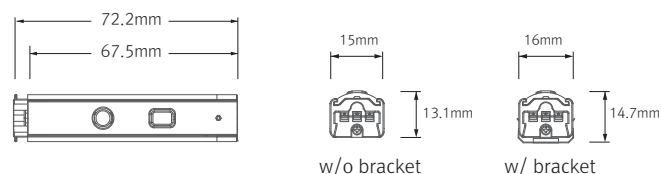


Model Name	Power Input (V)	Lamp Power (W)	A (mm)	B (mm)	C (mm)	D (mm)	E (mm)	F (mm)	G (mm)
DDV3 WC-24V	DC 24	2.9	140	145	162	16	14	15	12.5
DDV6 WC-24V	DC 24	5.8	280	285	302	16	14	15	12.5
DDV12 WC-24V	DC 24	11.6	560	565	582	16	14	15	12.5
DDV18 WC-24V	DC 24	17.4	840	845	862	16	14	15	12.5
DDV24 WC-24V	DC 24	23.2	1118	1123	1140	16	14	15	12.5

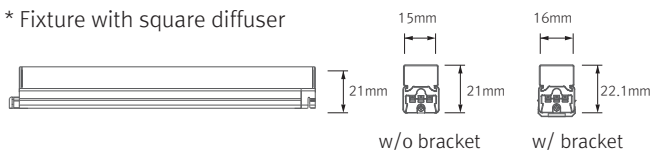
\* Fixture with round diffuser



\* Inline dimmer



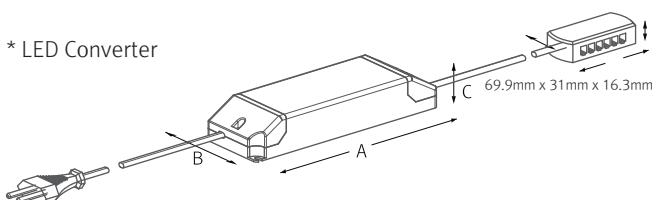
\* Fixture with square diffuser



\* Slim light system



\* LED Converter

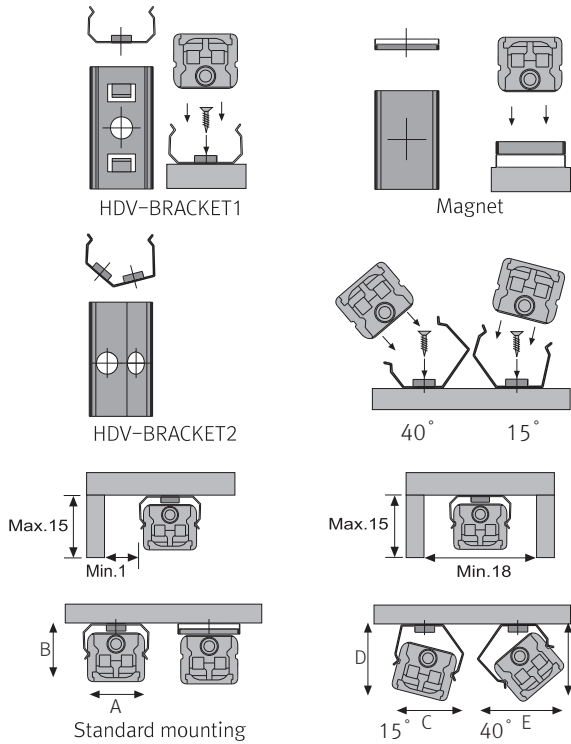


Modle name	A (mm)	B (mm)	C (mm)
FLC15-24V/T	121	45	16
FLC30-24V/T	150	41	31
FLC75-24V/T	180	60	32
FLC200-24V/T	250	65	38

## Easy connection



## Installation



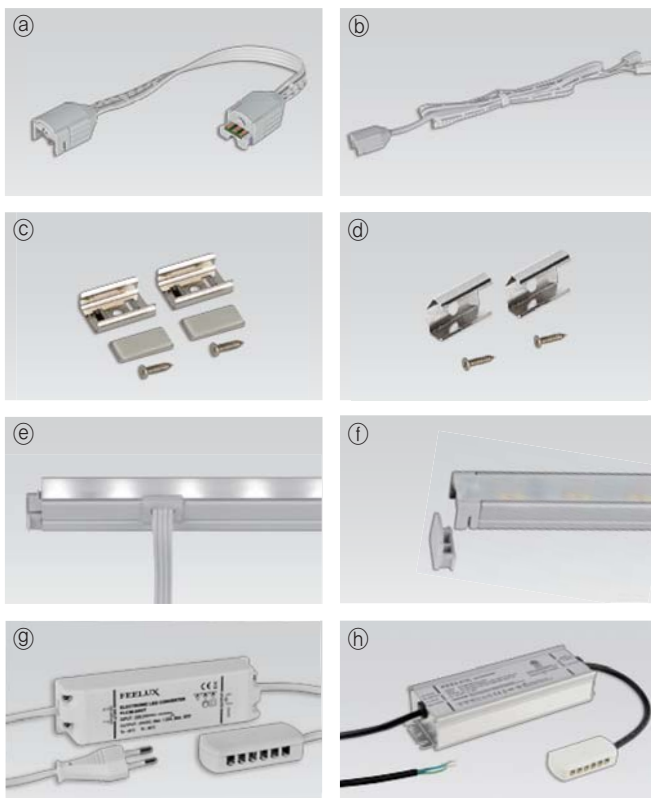
## Max. connection

- FLX Stix DDV : 75W in one row (single power feed)
- LED Driver

LED Driver Model Name	Max. units for LED Driver			
	24V/15W	24V/30W	24V/75W	24V/200W
DDV3 WC-24V	5	10	25	66
DDV6 WC-24V	2	5	12	33
DDV12 WC-24V	1	2	6	16
DDV18 WC-24V	-	1	4	11
DDV24 WC-24V	-	1	3	8

	A(mm)	B(mm)	C(mm)	D(mm)	E(mm)	F(mm)
Flat type	16.8	14.2	17.5	16.5	19.1	17.5
Round type	16.8	22.1	18.8	24.4	23.4	22.9
Square type	16.8	22.6	21.3	26.2	25.7	25.7

## Accessories



### a) Connecting cables (Between FLX Stix DDV & FLX Stix DDV)

HDVPTC	HDVPTC1	HDVPTC2	HDVPTC4	HDVPTC6
150mm(6inch)	300mm(1feet)	600mm(2feet)	1200mm(4feet)	1800mm(6feet)

### b) Power cable : HDVPC

Power cable 2500mm (Between FLX Stix DDV & 6-way distributor)

### c) Mounting bracket : HDV-BRACKET1

Included in fixture

### d) Angle bracket (15° & 40°) : HDV-BRACKET2

### e) Sidefeed for seamless extension (3W) : DDV3 WC-24V-S

The dimension is the same as DDV3 WC-24

Powered only through cable, no power supply on the input connector

### f) End cap : HDV - CAP

Included in fixture

### g) LED Driver with 6way distributor, with power cord(1800mm)

Part No	FLC15-24V/T	FLC30-24V/T	FLC75-24V/T
Capacity	15W 24V	30W 24V	75W 24V

### h) LED Driver : FLC200-24V/T (200W 24V)

LED Driver With 6way distributor



① Dimming Interface (1-10V) : FDC-L10  
Max. 100W (100W/CH, 1CH)



① Dimming Interface(0-10/1-10,DMX512)  
FDA-L2M0 : Max. 200W (100W/CH, 2CH)  
FDA-L5M : Max. 200W (100W/CH, 5CH)



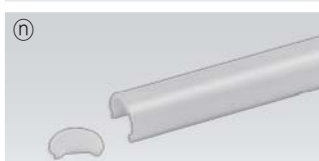
Ⓚ Inline Dimmer : DDVDIM (Max 75W in a row)



① Wireless dimmer (RF) : FRWDIM  
Voltage : Battery type DC3V

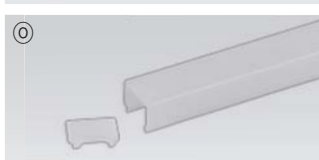


Ⓜ Wireless receiver (RF) : FRW-L4M  
Max. 480W (120W/CH, 4CH)



Ⓝ Round diffuser

HDV3CVRM	HDV6CVRM	HDV12CVRM	HDV18CVRM	HDV24CVRM
3W	6W	12W	18W	24W



Ⓞ Square diffuser

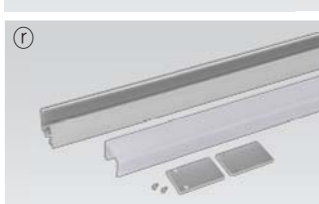
HDV3CVSM	HDV6CVSM	HDV12CVSM	HDV18CVSM	HDV24CVSM
3W	6W	12W	18W	24W



Ⓟ Door and motion detection sensor : FLS-M24V  
Voltage : DC 24V



Ⓠ Human-body detection sensor : FLS-P24V  
Voltage : DC 24V



Ⓡ Slim light system (1.2m) : SLS-EXT



*Make your own rainbow!*

Color changing LED

**FLX Stix RDV**

FEELUX



FEELUX

## FLX Stix RDV

LED for Display, Cabinet, Furniture & Cove

Color changing LED!



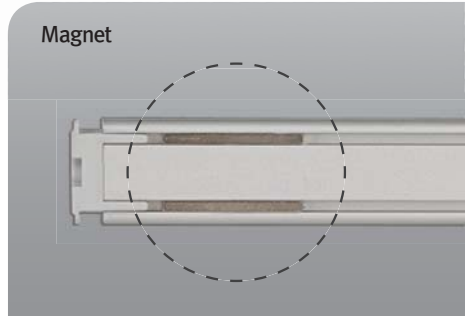
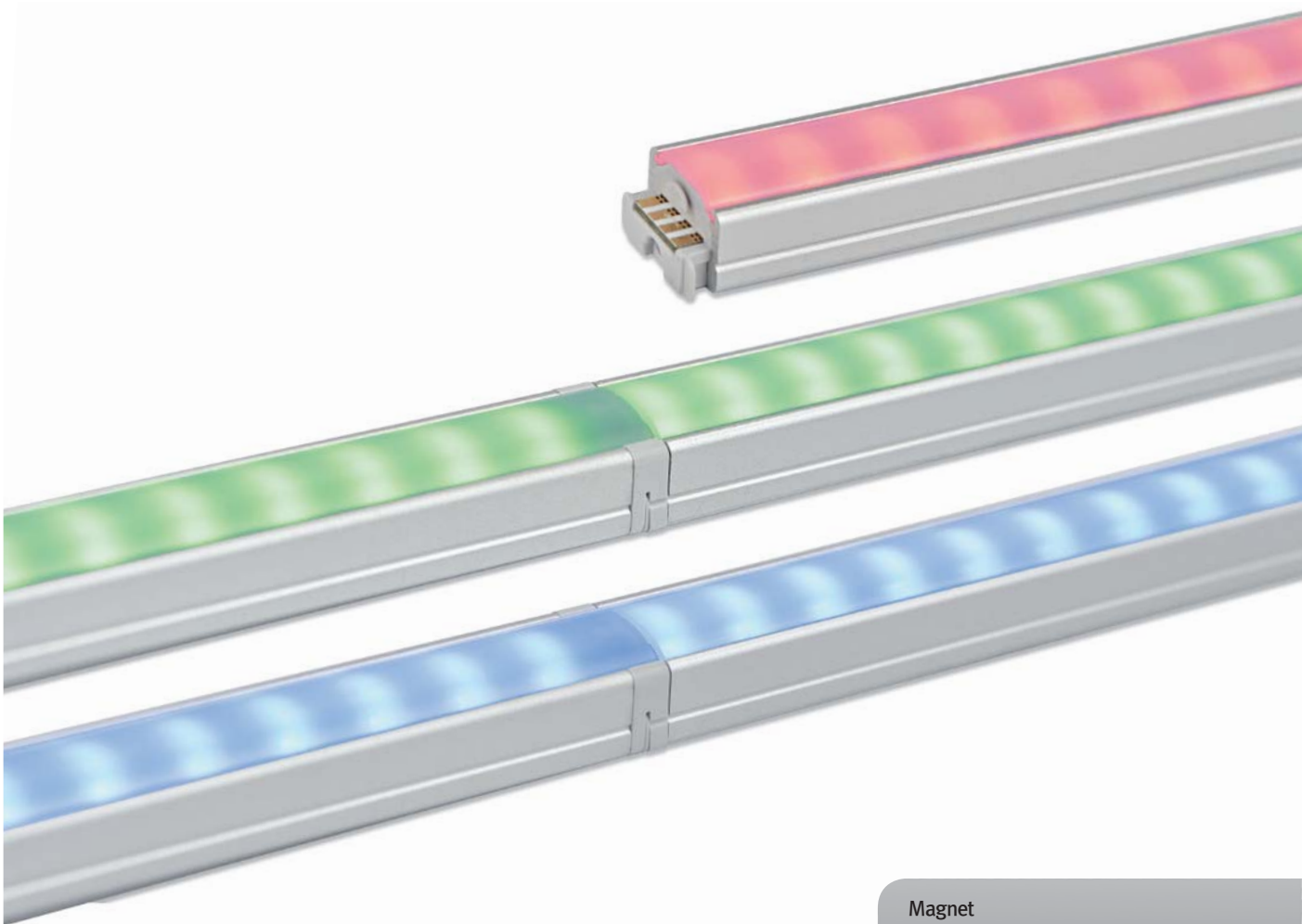


### Product Features

- Super Slim linear LED with RGB color changing output
- Quick connection system between fixtures
- Many lengths available
- Various mounting methods including magnetic
- To be used with constant voltage DC 24V driver
- Dimmable with available accessories

### Specification

- Voltage : DC 24V
- Operating temperature : 0~45° C
- Lamp life : 40,000hr
- RGB color changing
- Degree of protection IP20





**FLX Stix RDV**  
Color changing



FLX Stix RDV 6W Length (285 mm)



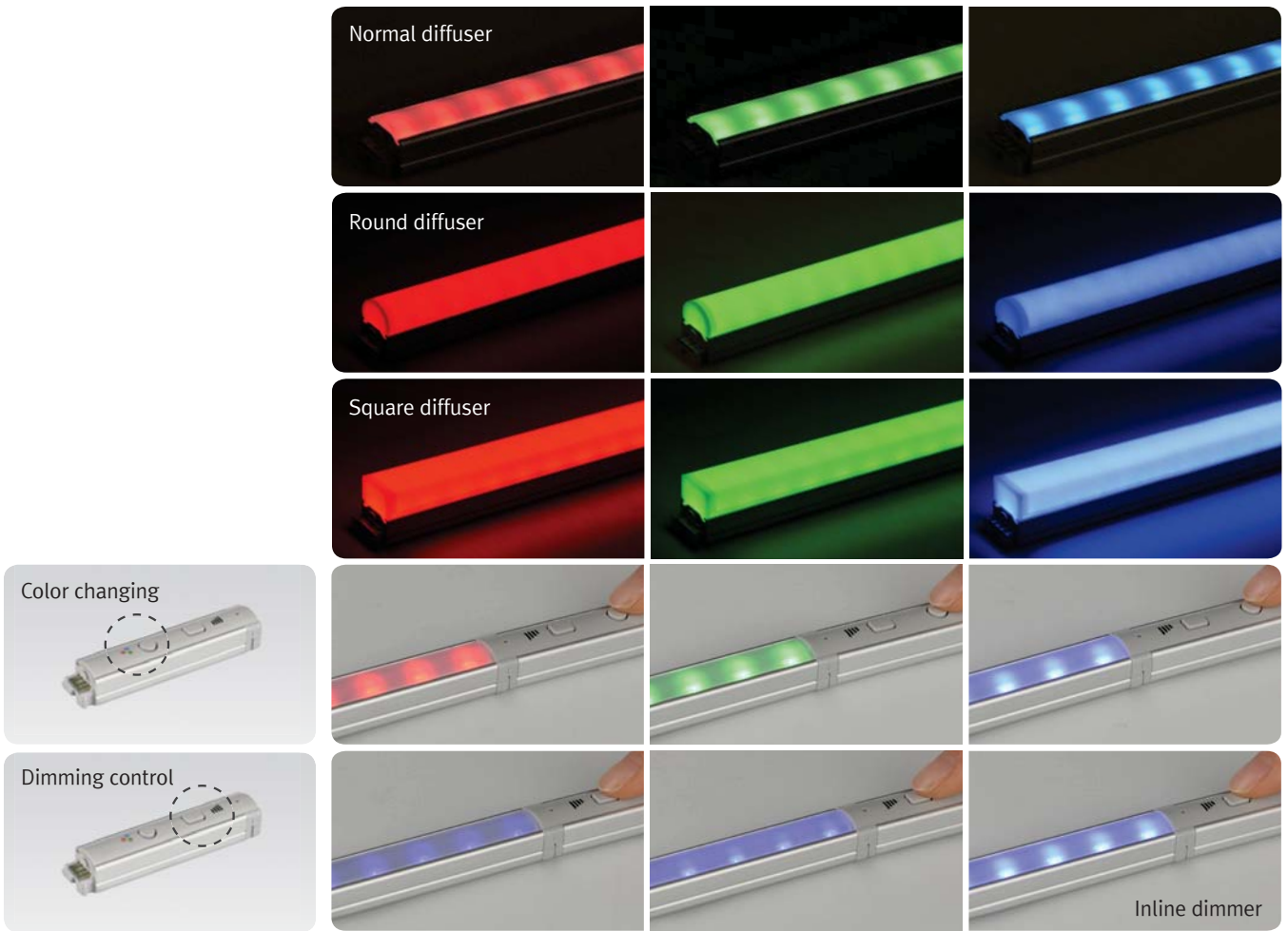
FLX Stix RDV 12W Length (565 mm)



FLX Stix RDV 18W Length (845 mm)

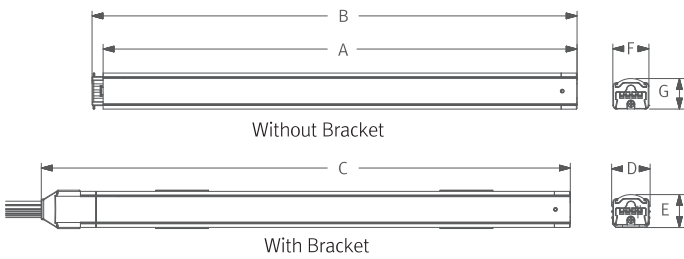


Color changing



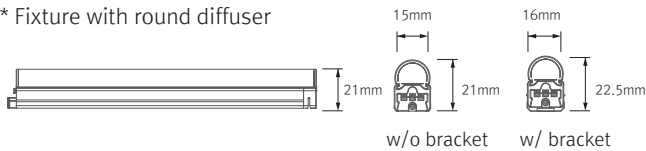
Dimension

\* Fixture

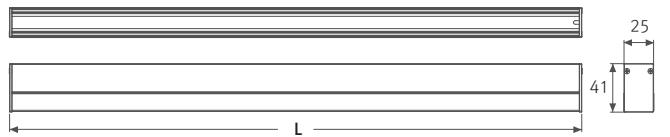


Model Name	Power Input (V)	Lamp Power (W)	A (mm)	B (mm)	C (mm)	D (mm)	E (mm)	F (mm)	G (mm)
RDV6 RGB-24V	DC 24	6.2	280	285	302	16	14	15	12.5
RDV12 RGB-24V	DC 24	12.4	560	565	582	16	14	15	12.5
RDV18 RGB-24V	DC 24	18.6	840	845	862	16	14	15	12.5

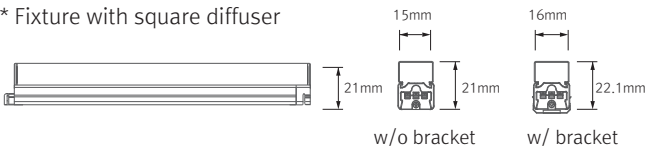
\* Fixture with round diffuser



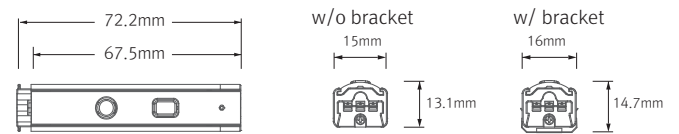
\* Slim light system



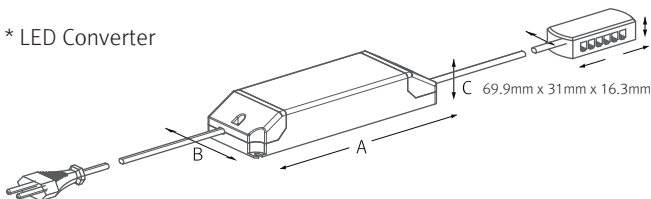
\* Fixture with square diffuser



\* Inline dimmer



\* LED Converter

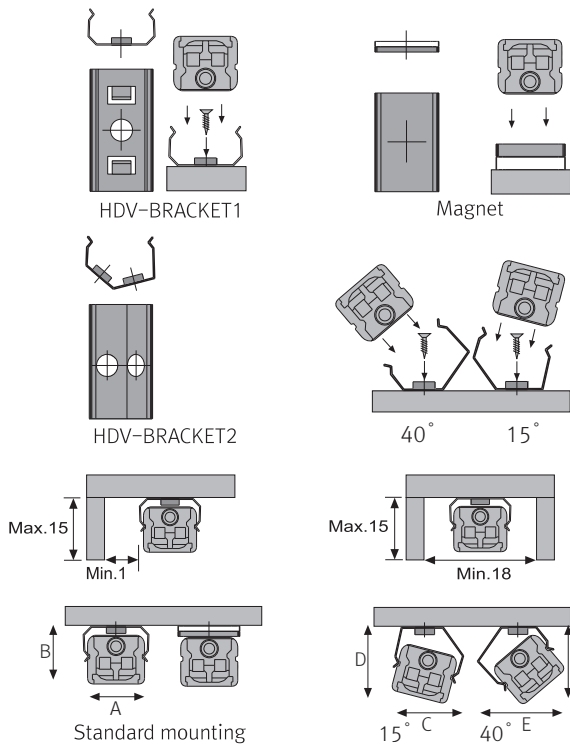


Model name	A (mm)	B (mm)	C (mm)
FLC15-24V/T	121	45	16
FLC30-24V/T	150	41	31
FLC75-24V/T	180	60	32
FLC200-24V/T	250	65	38

## Easy connection



## Installation



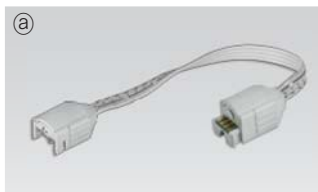
## Max. connection

- FLX Stix RDV : 75W in one row (single power feed)
- LED Driver

LED Driver Model Name	Max. units for LED Driver			
	24V/15W	24V/30W	24V/75W	24V/200W
RDV6 RGB-24V	2	4	12	32
RDV12 RGB-24V	1	2	6	16
RDV18 RGB-24V	-	1	4	10

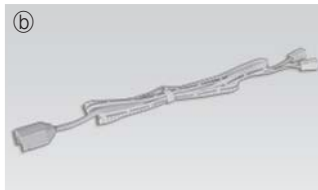
	A(mm)	B(mm)	C(mm)	D(mm)	E(mm)	F(mm)
Flat type	16.8	14.2	17.5	16.5	19.1	17.5
Round type	16.8	22.1	18.8	24.4	23.4	22.9
Square type	16.8	22.6	21.3	26.2	25.7	25.7

## Accessories



### Ⓐ Connecting cables (Between FLX Stix RDV & FLX Stix RDV)

RDVPTC	RDVPTC1	RDVPTC2	RDVPTC4	RDVPTC6
150mm(6inch)	300mm(1feet)	600mm(2feet)	1200mm(4feet)	1800mm(6feet)



### Ⓑ Power cable : RDVPC

Power cable 2500mm (Between FLX Stix RDV & 6-way distributor)



### Ⓒ Mounting bracket : HDV-BRACKET1

Included in fixture



### Ⓓ Angle bracket (15° & 40°) : HDV-BRACKET2



**e Sidefeed for seamless extension (6W) : RDV6 RGB-24V-S**  
 The dimension is the same as RDV6RGB24M  
 Powered only through cable, no power supply on the input connector



**f End cap : HDV - CAP**  
 Included in fixture



**g LED Driver with 6way distributor, with power cord(1800mm)**

Part No	FLC15-24V/T	FLC30-24V/T	FLC75-24V/T
Capacity	15W 24V	30W 24V	75W 24V



**h LED Driver : FLC200-24V/T (200W 24V)**  
 LED Driver With 6way distributor



**i Dimming Interface(0-10/1-10,DMX512)**  
 FDA-L2M0 : Max. 200W (100W/CH, 2CH)  
 FDA-L5M : Max. 200W (100W/CH, 5CH)



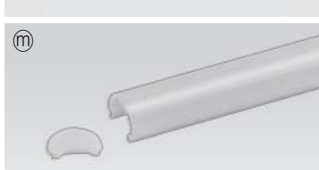
**j Inline dimmer :RDVDIM(Max 75W in a row)**



**k Wireless dimmer (RF) : FRWDIM**  
 Voltage : Battery type DC3V

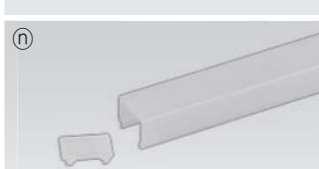


**l Wireless receiver (RF) : FRW-L3M**  
 Max. 360W (120W/CH, 3CH)



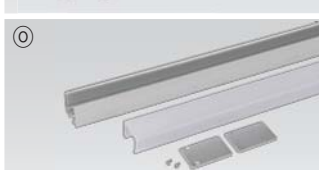
**m Round diffuser**

HDV6CVRM	HDV12CVRM	HDV18CVRM
6W	12W	18W



**n Square diffuser**

HDV6CVSM	HDV12CVSM	HDV18CVSM
6W	12W	18W



**o Slim light system (1.2m) : SLS-EXT**



*Super slim! Super light!*

Super Slim LED Recessed Spotlight

**FLX Spot** DVS

FEELUX



FEELUX

# FLX Spot DVS

LED for Kitchen cabinet, Displays & Furniture

Super Slim LED Recessed Spotlight





### Product Features

- Linkable together with FLX series
- Single 4W diode eliminates multiple shadows
- Virtually no heat emission and no UV radiation
- Available in silver, gold, white, black
- To be used with constant voltage DC 24V driver
- Dimmable with available accessories

### Specification

- Voltage : DC 24V
- Operating temperature : 0~45° C
- Lamp life : 40,000hr/70%
- Available color : 3000K, 4000K, 6000K
- Color rendering : Ra>85
- Energy efficiency : 80 lm/W
- Degree of protection : IP20
- Beam Angle : 60°
- Total energy consumption of 4.2W



Various color

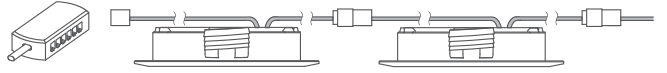
### Single diode without multiple shadow



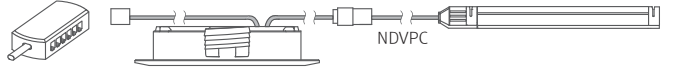


## Installation

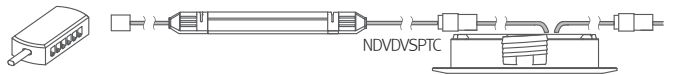
Linkable between FLX Spot DVS & FLX Spot DVS (Type A)



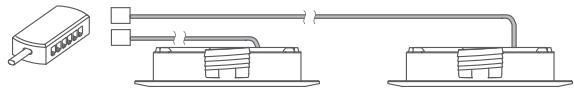
Linkable between FLX Spot DVS & FLX Stix NDV (Type A)



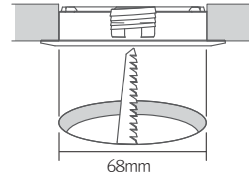
Linkable between FLX Stix NDV & FLX Spot DVS (Type A)



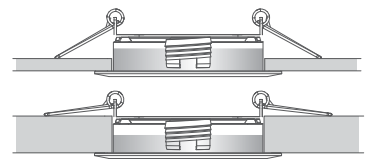
End Unit (Type B)



Hole Diameter

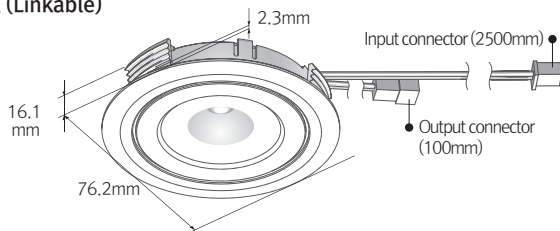


Mounting spring installation

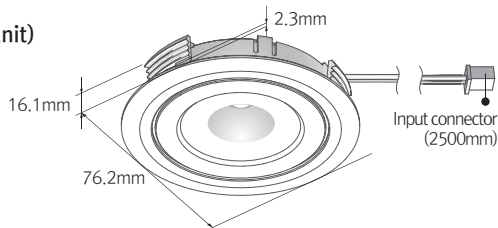


## Dimension

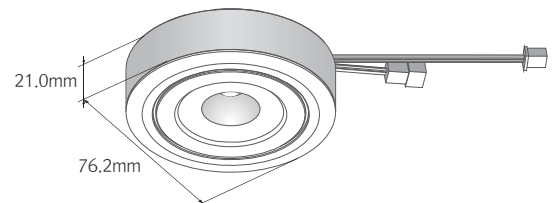
Type A (Linkable)



Type B (End unit)



Surface mount ring

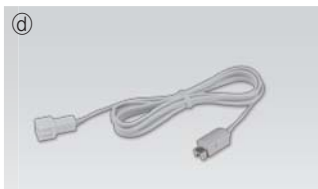


## Max. connection of linked fixtures

- FLX Spot DVS : Max 7pcs in a row
- LED Driver

Model Name	Max. units for Led driver			
	24V/15W	24V/30W	24V/75W	24V/200W
DVS4A4B24W	3	7	17	47
DVS4B4B24W	3	7	17	47

## Accessories



### ⓐ FLX Spot DVS linkable type

White	Black	Gold	Silver
DVS4A 40K-24V-WT	DVS4A 40K-24V-BK	DVS4A 40K-24V-GD	DVS4A 40K-24V-SV

### ⓑ FLX Spot DVS end unit type

White	Black	Gold	Silver
DVS4B 40K-24V-WT	DVS4B 40K-24V-BK	DVS4B 40K-24V-GD	DVS4B 40K-24V-SV

### ⓒ Extension cable : DVSPTC (2500mm)

Between FLX Spot DVS & FLX Spot DVS or 6 way distributor

### ⓓ Connecting cable : NDVDVSPTC (1000mm)

Between FLX Spot DVS & FLX Stix NDV





**e Connecting cable : NDVPC (2500mm)**

Between FLX Stix NDV & FLX Spot DVS



**f LED Driver with 6way distributor**

Part No	FLC15-24V/T	FLC30-24V/T	FLC75-24V/ T
Capacity	15W 24V	30W 24V	75W 24V



**g LED Driver : FLC200-24V/T (200W 24V)**

LED Driver With 6way distributor



**h Dimming Interface (1-10V) : FDC-L10**

Max. 100W (100W/CH, 1CH)



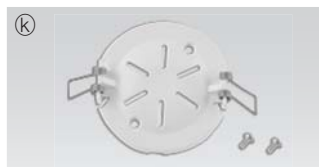
**i Dimming Interface(0-10/1-10,DMX512)**

FDA-L2M0 : Max. 200W (100W/CH, 2CH)

FDA-L5M : Max. 200W (100W/CH, 5CH)



**j Mounting spring: DVS spring**



**k Mounting Spring(Back cover spring)**

DVS BC SPRING



**l Surface mount ring**

White	Black	Gold	Silver
DVS MR-WT	DVS MR-BK	DVS MR-GD	DVS MR-SV



**m Deco Ring**

White	Black	Gold	Silver
DVS DR-WT	DVS DR-BK	DVS DR-GD	DVS DR-SV



**n Door and motion detection sensor (DC) : FLS-M24V**

Voltage : DC 24V



**o Human-body detection sensor (DC) : FLS-P24V**

Voltage : DC 24V

FEELUX

# FLX Spot DVS Swivel

LED for Kitchen cabinet, Displays & Furniture

Super Slim Swivel LED Spotlight



## Product Features

- Linkable together with FLX series
- Single 4W diode eliminates multiple shadows
- Virtually no heat emission and no UV radiation
- Available in silver, bronze, white, black
- To be used with constant voltage DC 24V driver
- Dimmable with available accessories

## Specification

- Voltage : DC 24V
- Operating temperature : 0~45° C
- Lamp life : 40,000hr/70%
- Available color : 3000K, 4000K, 6000K
- Color rendering : Ra>85
- Energy efficiency : 80 lm/W
- Degree of protection : IP20
- Beam Angle : 60°
- Total energy consumption of 4.2W



Various color

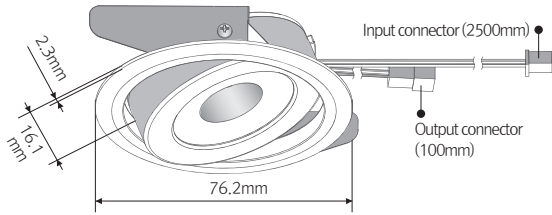


Swivels and tilts 20°

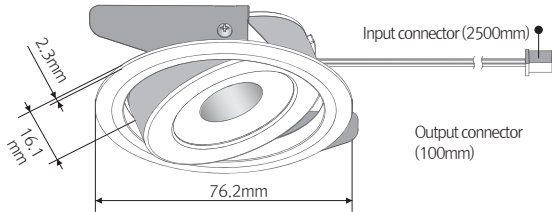


**Dimension**

**Type A (Linkable)**



**Type B (End unit)**



**Max. connection of linked fixtures**

- FLX Spot DVS Swivel : Max 7pcs in a row
- LED Driver

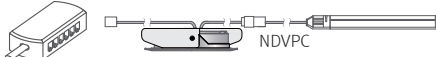
Model Name	Max. units for Led driver			
	24V/15W	24V/30W	24V/75W	24V/200W
DVS4A 40K-24V-SW-WT	3	7	17	47
DVS4B 40K-24V-SW-WT	3	7	17	47

**Installation**

Linkable between FLX Spot DVS Swivel & FLX Spot DVS Swivel (Type A)



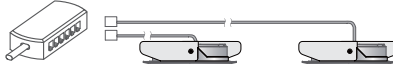
Linkable between FLX Spot DVS Swivel & FLX series (Type A)



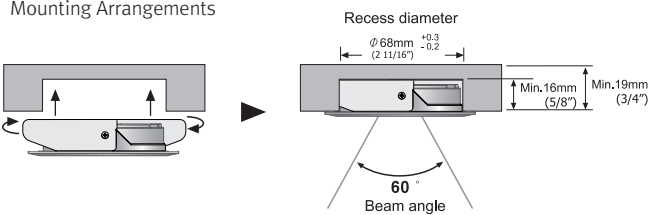
Linkable between FLX series & FLX Spot DVS Swivel (Type A)



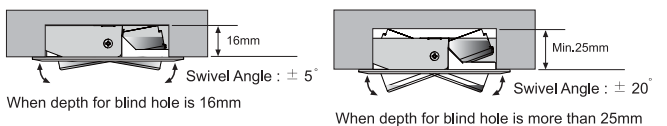
End Unit (Type B)



**Mounting Arrangements**



Admissible distances for blind hole installation in boards with a thickness of at least 19 mm.





**(a) FLX Spot DVS Swivel linkable type**

White	Black	Bronze	Silver
DVS4A 40K-24V-SW-WT	DVS4A 40K-24V-SW-BK	DVS4A 40K-24V-SW-BZ	DVS4A 40K-24V-SW-SV

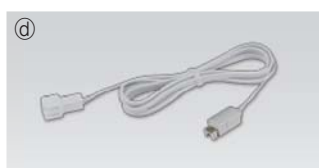


**(b) FLX Spot DVS Swivel end unit type**

White	Black	Bronze	Silver
DVS4B 40K-24V-SW-WT	DVS4B 40K-24V-SW-BK	DVS4B 40K-24V-SW-BZ	DVS4B 40K-24V-SW-SV



**(c) Extension cable : DVSPTC (2500mm)**  
Between FLX Spot DVS Swivel & FLX Spot DVS Swivel or 6 way distributor



**(d) Connecting cable : NDVDVSPTC (1000mm)**  
Between FLX Spot DVS Swivel & FLX Stix NDV



**(e) Connecting cable : NDVPC (2500mm)**  
Between FLX Stix NDV & FLX Spot DVS Swivel



**(f) LED Driver with 6way distributor**

Part No	FLC15-24V/T	FLC30-24V/T	FLC75-24V/ T
Capacity	15W 24V	30W 24V	75W 24V



**(g) LED Driver : FLC200-24V/T (200W 24V)**  
LED Driver With 6way distributor



**(h) Dimming Interface (1-10V) : FDC-L10**  
Max. 100W (100W/CH, 1CH)



**(i) Dimming Interface(0-10/1-10,DMX512)**  
FDA-L2M0 : Max. 200W (100W/CH, 2CH)  
FDA-L5M : Max. 200W (100W/CH, 5CH)



**(j) Door and motion detection sensor : FLS-M24V**  
Voltage : DC 24V



**(k) Human-body detection sensor : FLS-P24V**  
Voltage : DC 24V





## FEELED LED Lighting

<u>MonoRail</u>	<u>06</u>
<u>MonoRail HO</u>	<u>16</u>
<u>MonoRail Spot</u>	<u>20</u>
<u>FLX Stix NDV</u>	<u>28</u>
<u>FLX Stix HDV</u>	<u>34</u>
<u>FLX Stix DDV</u>	<u>40</u>
<u>FLX Stix RDV</u>	<u>46</u>
<u>FLX Spot DVS</u>	<u>54</u>
<u>FLX Spot DVS Swivel</u>	<u>60</u>

